



**MEDONTE HIGHLANDS
POLLED HEREFORDS
Orillia, Ontario
SUNDAY, SEPT. 19, 2021**



THE AUTUMN ALLIANCE SALE XXXIX

**12:00 Noon
Sunday, September 19, 2021**

Hosted By:
Medonte Highlands Polled Herefords
Orillia, Ontario
(3 miles West of Orillia on Hwy 12 West)

Jack and Lois McAughey
Kevin Brown, Manager
Business Office: 3055 Universal Drive
Mississauga, Ontario L4X 2E2

Jack (905) 625-3151	Farm Office (705) 326-6889
Cell (416) 346-0657	Kevin (705) 330-4663
Fax (905) 625-0558	

Visit www.medontehighlands.com

Sale Day Phones...

(705) 326-6889

Chris' Cell (306) 220-5006	Kevin's Cell (705) 330-4663
Shane's Cell (403) 363-9973	Joe's Cell (785) 633-3188
Ben's Cell (519) 374-3335	
Chad's Cell (306) 577-1256	

**10% junior discount
for Bonanza 2022**

CJHA Heifer Lottery 2021



Internet Bidding Available

DLMS
www.dlms.ca

For more information call DLMS:
Mark Shologan 780.699.5082 or
DLMS Purebred Team 780.991.3025

Sale Partners...

CHULA VISTA POLLED HEREFORDS

Casey & Jill Van Kessel
6781 10th Line, Thornton, ON L0L 2N0
Phone: (705) 458-2618 Fax: (705) 458-2151
Casey Cell: (705) 721-6428
Email: kcjill@outlook.com

BAR-J-M POLLED HEREFORDS

John & Barbara Mastine
29058B Highway 60, Whitney, ON K0J 2M0
Sarah Darraugh & Derek Black
5392 Highway 60, Douglas, ON K0J 1S0
Cell: (613) 334-1992
Email: sarahdarraugh@hotmail.com

DORBAY POLLED HEREFORDS

Rob, Denise & Emily Flack
60 Wheeler Court, Dorchester, ON N0L 1G2
Phone: (519) 268-2617 Office: (519) 685-4300
Fax: (519) 685-9410 Cell: (519) 857-8422
Email: rflack@masterfeeds.com

LIAN MOR POLLED HEREFORDS

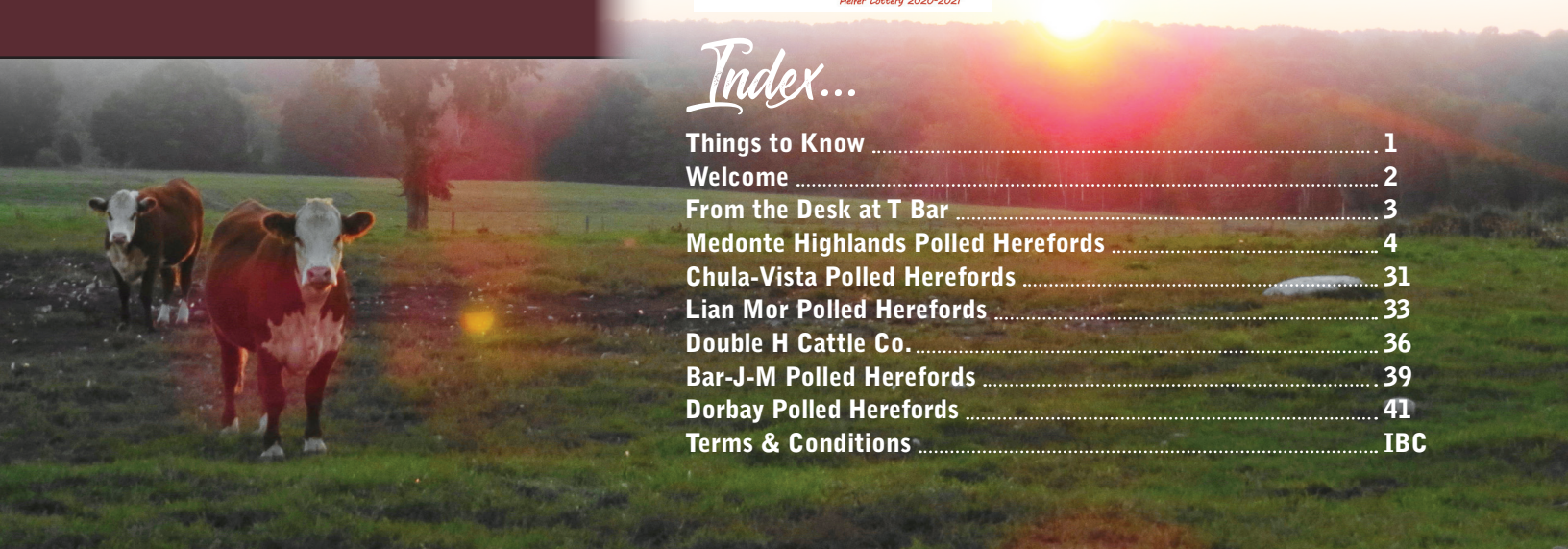
Wallace & Fern Pugh; Trevor & Amy Pugh
553245 County Road 16, Mono, ON L9W 6M1
Phone: (519) 941-8515 Cell: (519) 940-1319
Email: lianmor@sympatico.ca

DOUBLE H CATTLE CO.

Paul & Laura Stafford
1301 Campbell Drive, McNab Braeside, ON K7S 0E1
Paul: (613) 297-7841
Laura: (613) 612-0822
Email: doublehcc@hotmail.com

Index...

Things to Know	1
Welcome	2
From the Desk at T Bar	3
Medonte Highlands Polled Herefords	4
Chula-Vista Polled Herefords	31
Lian Mor Polled Herefords	33
Double H Cattle Co.	36
Bar-J-M Polled Herefords	39
Dorbay Polled Herefords	41
Terms & Conditions	IBC



Sale Representatives...

Canadian Hereford Association

NELS NIXDORFF President
ROB FLACK Vice President
STEPHEN SCOTT Executive Director
JAMIE O'SHEA Director

Ontario Hereford Association

KAREN PASZTERNAK President
BILL & JILL CORP Secretary Managers

Quebec Hereford Association

RICKY BUSHEY President
ANDRE BEAUMONT Secretary

Sale Staff...

AUCTIONEER:

T Bar C Cattle Co. Ltd.

CHRIS POLEY (306) 220-5006

RINGSIDE:

T Bar C Cattle Co. Ltd.

SHANE MICHELSON (403) 363-9973
BEN WRIGHT (519) 374-3335
CHAD WILSON (306) 577-1256

American Hereford Association

JOE RICKABAUGH (785) 633-3188

INSURANCE:

Alameda Agencies Ltd.

BONNIE THOMPSON (306) 489-2258

TRUCKING:

We encourage people to stop by the week prior to the sale to view the offering

Things To Know...

LOCATION:

Medonte Highlands Polled Herefords
3 miles West of Highway 11
(Orillia) on Highway 12 (West).
Orillia is 65 miles North of
Highway 401 and 400 intersection
in Toronto.

DATE & TIME:

Sunday, September 19, 2021
at 12:00 Noon

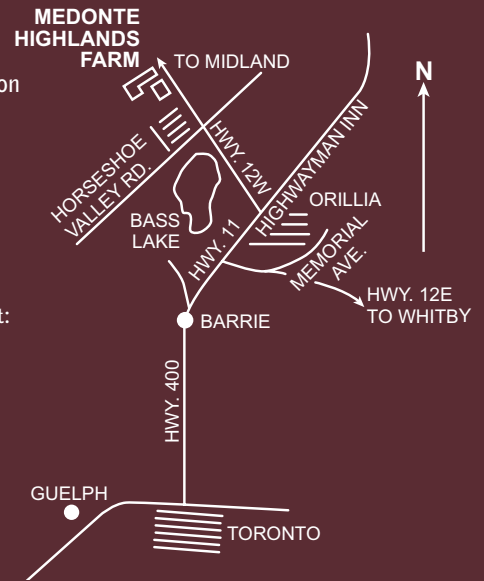
ACCOMMODATIONS:

A block of rooms have been reserved at:

Fairfield Inn
8 Mulcahy Court
Orillia, Ontario (249) 449-0368
(705) 413-3035
Highway 11 & 12 West
Behind Home Depot

Comfort Inn
75 Progress Drive
Orillia, Ontario (705) 327-7744

Comfort Inn
Hwy 400 & Hart Drive
Barrie, Ontario (705) 722-3600



H.S. KNILL CO. LTD.

Specializing in Purebred Livestock Transportation
Providing Weekly service across Canada & The USA.
Gooseneck service available to your farm in Ontario.
Pick up & delivery points across Canada and USA.

829 Rest Acres Road, Paris, Ontario N3L 3E3
Toll Free 877-442-3106 or 519-442-6242
Fax 519-442-1122 hsknill@pppoe.ca

View the catalogue and
videos online at
www.BuyAgro.com

Complimentary breakfast and refreshments
available sale day

Plan an Ontario Hereford Weekend

September 17 - River Valley Production Sale, Newburgh, ON
September 18 - Elm-Lodge & Friends, Indian River, ON
September 19 - Autumn Alliance XXXIX, Orillia, ON

We will be following COVID-19 regulations
applicable to Simcoe County, Ontario in place at
the time of the sale.

Welcome...

Welcome,



The 39th edition of the Autumn Alliance is approaching quickly. Jack and Lois continue to enjoy the Hereford breed and the lifelong friendships that they have made over the years.

This year's offering has an abundance of diversity while maintaining a high quality level. Our innovative herd sires are proving themselves in production. The Alliance partners have consigned front pasture type Hereford's.

Thanks to Jack & Lois for their continued support. Also thank you to Randi-Lynn Hawke-Leblanc and Faith Walker for everything you do for us day after day.

Contact any of us if you require any further information.

Regards,
Kevin

Visit www.medontehighlands.com



MPPH 106H
2020 High selling heifer calf to
Abbey Hill Farms



MPPH 1011G
2020 High selling bred heifer to
Tori Investments Inc



From the Desk at T Bar...

Welcome to the Annual Autumn Alliance Sale on September 19th at Medonte Highlands Polled Herefords, Orillia, Ontario. It is the XXXIX edition... No that is not a typo or a secret computer code, it is a record 39 years for this breed leading event. For great breeds to succeed it takes breeder leadership; Jack and Lois McAughey and family have maintained a leading role in the breed for close to four decades. Their elite cow herd has produced a multitude of herd bulls that have been an influence for breeders around the globe in addition to the hundreds of females that have graced the sale ring.

As in sport, there is the front office, but winning teams need a quarterback who knows the product and executes the game plan. Kevin Brown has done an outstanding job for the Medonte breeding program in the pastures, and in the show and sale rings.

Although Covid has slowed happenings throughout the world, it has not stopped the progress at Medonte Highlands as they continue to move forward in their leadership and program. The 39th year lineup is exciting and highly competitive; there is no doubt, that the opportunity to acquire the influence of the great championship "Nita" family is a headline, but a powerful offering of young, bred females are destined to front pastures in the breed as well. As in the past, several fellow breeders offer their finest to add flavor to the event.

As you peruse through the catalogue, you will only see one bull calf in the offering. This exciting new acquisition is the next generation sire for the folks at Medonte. "Media 240J" combines performance, carcass, and high maternal values in one out-cross package with outstanding phenotype. What an opportunity to get in on the ground floor as Medonte offers to share "Media" with their fellow breeders.

Plan to be with us on Sunday, September 19th for Autumn Alliance 39 in person, online or on the telephone as it will be opportunity day for the Hereford breed. Feel free to stop by the ranch and Kevin will give you a private tour any time prior the sale.

During these times, do not hesitate to call anyone on the T Bar C team and we will be pleased to assist you with your selections in a professional, confidential manner.

Chris Poley



Sale Management

Chris Poley

(306) 220-5006

Shane Michelson

(403) 363-9973

Ben Wright

(519) 374-3335



Box 2330

Warman, SK

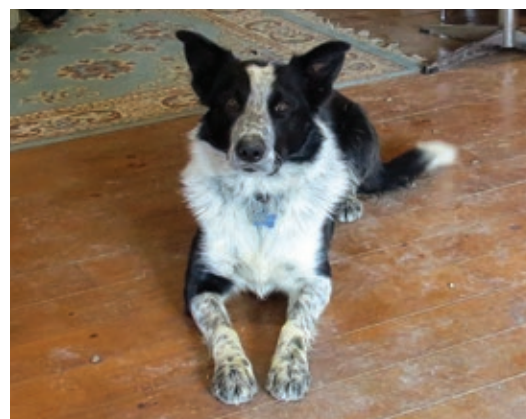
S0K 4S0

Ph: (306) 933-4200

Fax: (306) 934-0744

info@tbarc.com

www.buyagro.com



Medonte Highlands Polled Herefords

Lot 1A, 1B, 1C Offering Two Out of Three



- Silver trophy award winner
- Predictable in production
- Grandmother is the dam of Empire
- Immense body shape
- Optimum teat size
- Toronto Royal Winter Fair 2016 Grand Champion Female

Bred to Loewen Genesis G16 ET on March 28, 2021, preg checked safe

Lot 1A

Lot 1A MHPH 10Y NITA 305B (DLF HYF IEF MSUDF MDF)
PC02995070 MHPH 305B 05/03/2014 POLLED FEMALE

SHF WONDER M326 W18 ET (DLF HYF IEF MDC)
NJW 73S W18 HOMETOWN 10Y ET (DLF HYF IEF MDC)
 NJW P606 72N DAYDREAM 73S (DLF HYF IEF)
 WILGOR 55K NORTHEASTERN OL 2N (DLF HYF IEF)
MHPH MS 2N NITA 107T (DLF HYF IEF)
 MHPH MS 68M NITA 1112R (DLF HYF IEF)
 KCF BENNETT 3008 M326 (DLF HYF IEF MDF)
 SHF GOVERNESS 236G L37
 PW VICTOR BOOMER P606 (MDF)
 NJW 94J DEW 72N (DLF HYF IEF)
 REMITALL ONLINE 122L
 WILGOR 174H KEYLINE 29F 55K
 STAR AMERICA BNMHPH SS MKS 68M (DLF HYF IEF)
 MHPH MS 29F NITA 112L (DLF HYF IEF)

EPDS	BW	WW	YW	MM	TM
	3.8	58.2	96.5	26.7	55.8

Lot 1B MHPH 84G NITA 112J (DLF HYF IEF MSUDF MDF)
PC03081730 MHPH 112J 12/01/2021 POLLED FEMALE

REMITALL-W RAINMAKER ET 14E (DLF HYF IEF MSUDF MDF)
REMITALL-W VORTEX ET 84G (DLF HYF IEF MSUDF MDF)
 REMITALL-WEST BELLE 36B (DLF HYF IEF MSUDF MDF)
 NJW 73S W18 HOMETOWN 10Y ET (DLF HYF IEF MDC)
MHPH 10Y NITA 305B (DLF HYF IEF MSUDF MDF)
 MHPH MS 2N NITA 107T (DLF HYF IEF)
 KCL WPF THE PROFESSOR 7110ET (DLF HYF IEF MSUDF)
 REMITALL-WEST MARVELET 76Y (DLF HYF IEF MDF)
 REMITALL-WEST GAME DAY ET 74Y (DLF HYF IEF MDC)
 REMITALL BELLE 132U
 SHF WONDER M326 W18 ET (DLF HYF IEF MDC)
 NJW P606 72N DAYDREAM 73S (DLF HYF IEF)
 WILGOR 55K NORTHEASTERN OL 2N (DLF HYF IEF)
 MHPH MS 68M NITA 1112R (DLF HYF IEF)

EPDS	BW	WW	YW	MM	TM
88 lbs.	5.3	53.0	90.6	29.3	55.8



- Gorgeous headed
- Graceful in motion
- Functional in her design

Lot 1B

Medonte Highlands Polled Herefords Lot 1A, 1B, 1C Offering Two Out of Three



Lot
1C

Lot
1C

MHPH 68E **NITA** 114H (DLF HYF IEF MSUDF MDF)

PC03070821 MHPH 114H 14/01/2020 POLLED FEMALE

TH 71U 17Y MOUNTAINEER 420A (DLF HYF IEF MSUDF) TH 22R 16S LAMBEAU 17Y
 ANL 420A MOUNTAINEER 787X 68E (DLF HYF IEF MSUDF) TH 7N 45P RITA 71U (DLF HYF IEF)
 VG KLONDIKE KATE 787X (DLF HYF IEF MSUDF) HF 4L BEYOND 36N
 SHF WONDER M326 W18 ET (DLF HYF IEF MDC)
 NJW 73S W18 HOMETOWN 10Y ET (DLF HYF IEF MDC) NJW P606 72N DAYDREAM 73S (DLF HYF IEF)
MHPH 10Y NITA 305B (DLF HYF IEF MSUDF MDF) WILGOR 55K NORTHEASTERN OL 2N (DLF HYF IEF)
 MHPH MS 2N NITA 107T (DLF HYF IEF) MHPH MS 68M NITA 1112R (DLF HYF IEF)

BW	EPDS	BW	WW	YW	MM	TM
84 lbs.		3.9	44.8	77.5	23.3	45.7

- Maternal power
- Huge ribbed
- Abundance of breed character

Bred to Churchill Red Baron 8300F ET on April 9, 2021, preg checked safe



Sire of MHPH 114H
ANL 420A Mountaineer 787X 68E

Medonte Highlands Polled Herefords

REF **CHURCHILL RED BARON** 8300F ET (DLF HYF IEF MSUDF MDF)
A PC03073840 8300 14/03/2018 POLLED MALE

HYALITE ON TARGET 936
R LEADER 6964
 R MISS REVOLUTION 1009

CHURCHILL RED BULL 200Z (DLF HYF IEF MDF)
CHURCHILL LADY 500C ET
 HVH OKSANA 4L 33N (DLF HYF IEF)

SCHU-LAR ON TARGET 22S
 HYALITE TS LASS 310
 MSU TCF REVOLUTION 4R (DLF HYF IEF)
 R MISS WRANGLER 3007

CHURCHILL SENSATION 028X (DLF HYF IEF)
 CHURCHILL LADY 002X ET
 HVH KREMLIN 57F 108K
 HVH GENETIC QUEEN 53H 4L (DLF HYF IEF)

BW	EPDS	BW	WW	YW	MM	TM
85 lbs.		1.1	67.1	110.3	32.4	66.0

Owned by Medonte Highlands Polled Herefords, Churchill Cattle Co and Sierra Ranches



Ref
A



Lot
2

Lot 2 MHPH 8300 **NITA** ET 111J (DLF HYF IEF MSUDF MDF)
PC03083341 MHPH 111J 11/01/2021 POLLED FEMALE

BW	EPDS	BW	WW	YW	MM	TM
76 lbs.		1.3	64.1	103.1	32.4	64.5

- Generations of maternal power
- Pleasing from all angles
- Captivating in motion

Terms to be announced

R LEADER 6964
CHURCHILL RED BARON 8300F ET (DLF HYF IEF MSUDF MDF)
 CHURCHILL LADY 500C ET
 HYALITE ON TARGET 936
 R MISS REVOLUTION 1009
 CHURCHILL RED BULL 200Z (DLF HYF IEF MDF)
 HVH OKSANA 4L 33N (DLF HYF IEF)
 SHF WONDER M326 W18 ET (DLF HYF IEF MDC)
 NJW 73S W18 HOMETOWN 10Y ET (DLF HYF IEF MDC)
MHPH 10Y NITA 226B (DLF HYF IEF MDF)
 MHPH MS 68M NITA 1112R 33N (DLF HYF IEF)
 NJW P606 72N DAYDREAM 73S (DLF HYF IEF)
 STAR.AMERICA.BNMHPH.SS.MKS.68M (DLF HYF IEF)
 MHPH MS 29F NITA 112L (DLF HYF IEF)



MHPH 10Y Nita 226B
Dam



2019 Royal Reserve Senior Heifer Calf Champion
MHPH 105G - Maternal Sister
Owned with Anita Doktor



MHPH 3134 Evolution 117E
Maternal brother to MHPH 111J

Medonte Highlands Polled Herefords



Lot
3

Lot 3 MHPH VLE 8300 **NOLA 1151J** {DLF HYF IEF MSUDF MDF
PC03084663 MHPH 1151J 15/01/2021 POLLED FEMALE

R LEADER 6964
CHURCHILL RED BARON 8300F ET (DLF HYF IEF MSUDF MDF)
CHURCHILL LADY 500C ET

HYALITE ON TARGET 936
R MISS REVOLUTION 1009
CHURCHILL RED BULL 200Z (DLF HYF IEF MDF)
HVH OKSANA 4L 33N (DLF HYF IEF)

REMITALL-WEST MOONDANCE ET 40B (DLF HYF IEF MDF)
REMITALL-W NOLA 150D (DLF HYF IEF MSUDF MDF)
BBSF 719T NOLA 68A

REMITALL-WEST GAME DAY ET 74Y (DLF HYF IEF MDC)
REMITALL-WEST YELLOW ROSE 2Y (DLF HYF IEF)
TH 122 711 VICTOR 719T (DLF HYF IEF MDF)
BBSF 303T NOLA 63Y (DLF HYF IEF)

BW	EPDS	BW	WW	YW	MM	TM
82 lbs.		3.2	55.5	90.1	33.0	60.8

- Extra length and depth
- Easy doing
- Total package

Owned with Venture Livestock Enterprises



Dam of MHPH 1151J
Remitall-W Nola 150D

- Genetic gem
- Cowy design
- Astonishing shape



Lot
4

Lot 4 MHPH 8300 **TEMPTRESS** 204J {DLF HYF IEF MSUDF MDF}
PC03081790 MHPH 204J 04/02/2021 POLLED FEMALE

R LEADER 6964
CHURCHILL RED BARON 8300F ET (DLF HYF IEF MSUDF MDF)
 CHURCHILL LADY 500C ET
 HAROLDSON'S TOTEM 200Z 5D (DLF HYF IEF MSUDF)
MHPH 5D TEMPTRESS 325F (DLF HYF IEF MSUDF)
 JJPH 127Y 861U FLAME 419B (DLF HYF IEF)

HYALITE ON TARGET 936
 R MISS REVOLUTION 1009
 CHURCHILL RED BULL 200Z (DLF HYF IEF MDF)
 HVH OKSANA 4L 33N (DLF HYF IEF)
 CHURCHILL RED BULL 200Z (DLF HYF IEF MDF)
 BLAIR'S NELLIE R117 ET 5B (DLF HYF IEF)
 JJPH 83T BENCHMARK 127Y (DLF HYF IEF)
 JJPH 21M FLAME 861U

Lot 4A MHPH 5D **TEMPTRESS** 325F {DLF HYF IEF MSUDF}
PC03045741 MHPH 325F 25/03/2018 POLLED FEMALE

CHURCHILL RED BULL 200Z (DLF HYF IEF MDF)
HAROLDSON'S TOTEM 200Z 5D (DLF HYF IEF MSUDF)
 BLAIR'S NELLIE R117 ET 5B (DLF HYF IEF)
 JJPH 83T BENCHMARK 127Y (DLF HYF IEF)
JJPH 127Y 861U FLAME 419B (DLF HYF IEF)
 JJPH 21M FLAME 861U

CHURCHILL SENSATION 028X (DLF HYF IEF)
 CHURCHILL LADY 002X ET
 SHF RIB EYE M326 R117 (DLF HYF IEF)
 NCX MISS JR NELLIE 528N
 WLB ELI 10H 83T (DLF HYF IEF)
 JJPH 824H 36N TEMPTATION 804U (DLF HYF IEF)
 REMITALL NORTHERNER 19N
 HINTERLAND TRUE TEMPER 21M

BW	EPDS	BW	WW	YW	MM	TM
77 lbs.		2.9	66.0	107.7	28.9	61.9

EPDS	BW	WW	YW	MM	TM
	4.7	64.6	104.6	25.4	57.7

- Head turner
- Tidy udder
- Bold ribbed
- Expresses an abundance of breed character

Bred to Churchill Red Baron 8300F ET on March 26, 2021, preg checked safe



Lot
4A

Medonte Highlands Polled Herefords



- Carbon copy of Lot 4
- Impressive structure
- Strong maternally

Lot
5

Lot 5 MHPH 8300 **FAITH** 2042J {DLF HYF IEF MSUDF MDF}
PC03081822 MHPH 2042J 04/02/2021 POLLED FEMALE

R LEADER 6964
CHURCHILL RED BARON 8300F ET {DLF HYF IEF MSUDF MDF}
CHURCHILL LADY 500C ET

HYALITE ON TARGET 936
R MISS REVOLUTION 1009
CHURCHILL RED BULL 200Z {DLF HYF IEF MDF}
HVH OKSANA 4L 33N {DLF HYF IEF}

MHPH 10Y CHIZEL ET 1021C {DLF HYF IEF MSUDF MDF}
BAR-J-M RED PINE FAITH 16G {DLF HYF IEF MSUDF MDF}
RED-PINE 821X FAITH 1E {DLF HYF IEF MSUDF MDF}

NJW 73S W18 HOMETOWN 10Y ET {DLF HYF IEF MDC}
MHPH 301W DAINTY 205Y {DLF HYF IEF MSUDF MDF}
BJM-HRF TRADITION 13T
SQUARE-D JUDY 821X {DLF HYF IEF}

Lot 5A BAR-J-M RED PINE **FAITH** 16G {DLF HYF IEF MSUDF MDF}
PC03058237 JB 16G 13/01/2019 POLLED FEMALE

NJW 73S W18 HOMETOWN 10Y ET {DLF HYF IEF MDC}
MHPH 10Y CHIZEL ET 1021C {DLF HYF IEF MSUDF MDF}
MHPH 301W DAINTY 205Y {DLF HYF IEF MSUDF MDF}

SHF WONDER M326 W18 ET {DLF HYF IEF MDC}
NJW P606 72N DAYDREAM 73S {DLF HYF IEF}
MHPH 102S WYATT 301W {DLF HYF IEF}
MHPH MS 101S DAINTY 123U {DLF HYF IEF}

STAR AMERICA BNMHPH SS MKS 68M {DLF HYF IEF}
BAR-J-M GLORIA 9P
SQUARE-D TUSCON 362T
SQUARE-D MAXINE 8211U

BJM-HRF TRADITION 13T
RED-PINE 821X FAITH 1E {DLF HYF IEF MSUDF MDF}
SQUARE-D JUDY 821X {DLF HYF IEF}

BW	EPDS	BW	WW	YW	MM	TM
78 lbs.		6.1	73.5	120.9	27.5	64.3

EPDS	BW	WW	YW	MM	TM
	5.8	62.5	104.2	22.5	53.8



- Efficient young cow
- Tremendous udder quality

Bred to Remital-W MHPH
Justice 2H on April 10, 2021,
preg checked safe

Lot
5A

- Overwhelming presence
- Ideal body shape
- Classy fronted



Lot 6 MHPH 84G **EMERALD** 1019J {DLF HYF IEF MSUDF MDF}
 PC03081796 MHPH 1019J 01/01/2021 POLLED FEMALE

REMITALL-W RAINMAKER ET 14E {DLF HYF IEF MSUDF MDF} KCL WPF THE PROFESSOR 7110ET {DLF HYF IEF MSUDF}
 REMITALL-W VORTEX ET 84G {DLF HYF IEF MSUDF MDF} REMITALL-WEST MARVEL ET 76Y {DLF HYF IEF MDF}
 REMITALL-WEST BELLE 36B {DLF HYF IEF MSUDF MDF} REMITALL WEST GAME DAY ET 74Y {DLF HYF IEF MDC} REMITALL BELLE 132U
 CRR 109 CATAPULT 322 CRR 719 CATAPULT 109 {DLF HYF IEF}
MHPH 322 EMERALD 102G {DLF HYF IEF MSUDF MDF} CRR 713 KELLY 0117
 R LEADER 6964
 ELM-LODGE EMERALD 25E {DLF HYF IEF MSUDF MDF} ELM-LODGE BLING 18B

Lot 6A MHPH 322 **EMERALD** 102G {DLF HYF IEF MSUDF MDF}
 PC03058300 MHPH 102G 02/01/2019 POLLED FEMALE

CRR 719 CATAPULT 109 {DLF HYF IEF} TH 122711 VICTOR 719T {DLF HYF IEF MDF}
CRR 109 CATAPULT 322 CRR 4037 ECLIPSE 808
 CRR 713 KELLY 0117 CRR 63J KODIAK 713
 CRR 9B KELLY 521
 R LEADER 6964 HYALITE ON TARGET 936
ELM-LODGE EMERALD 25E {DLF HYF IEF MSUDF MDF} R MISS REVOLUTION 1009
 ELM-LODGE BLING 18B CRR ABOUT TIME 743 {DLF HYF IEF MDF}
 ELM-LODGE ZUMBA 3Z

BW	EPDS	BW	WW	YW	MM	TM
66 lbs.		2.5	59.4	86.2	28.1	57.8

EPDS	BW	WW	YW	MM	TM
	0.9	56.0	77.1	29.4	57.4

- Level uddered
- Efficient in motherhood
- Reliable maternal heritage
- Scurs removed

Bred to Remital-W MHPH Justice 2H on April 19, 2021, preg checked safe



Medonte Highlands Polled Herefords



- Strength through the front end
- Robust lower body mass
- Easy doing

Lot
7

Lot 7 MHPH 84G **AMBER** 1013J (DLF HYF IEF MSUDF MDF)
PC03081795 MHPH 1013J 01/01/2021 POLLED FEMALE

KCL WPF THE PROFESSOR 7110ET (DLF HYF IEF MSUDF)
REMITALL-W RAINMAKER ET 14E (DLF HYF IEF MSUDF MDF) REMITALL-WEST MARVEL ET 76Y (DLF HYF IEF MDF)
REMITALL-W VORTEX ET 84G (DLF HYF IEF MSUDF MDF) REMITALL-WEST GAME DAY ET 74Y (DLF HYF IEF MDF)
REMITALL-WEST BELLE 36B (DLF HYF IEF MSUDF MDF) REMITALL BELLE 132U
TH 512X 719T PLAYMAKER 14Z (MDF)
HARVIE STREAMLINE ET 200D (DLF HYF IEF MSUDF MDF) HARVIE MS FIREFLY 24U (DLF HYF IEF)
HARVIE MS AMBER 15G (DLF HYF IEF MSUDF MDF) MHPH 521X ACTION 106A (DLF HYF IEF MSUDF)
DORBAY MISS AMBER 405C (DLF HYF IEF) MHPH MS 122L AMBER 121X (DLF HYF IEF)

Lot 7A HARVIE **MS AMBER** 15G (DLF HYF IEF MSUDF MDF)
PC03057245 CVIH 15G 22/01/2019 POLLED FEMALE

TH 122 711 VICTOR 719T (DLF HYF IEF MDF) TH 122 711 DOMINETTE 512X ET
BNMHPH 13P HEAT 101S (DLF HYF IEF MDF) HARVIE MISS CONNIE 1Y 19L
TH 122 711 VICTOR 521X ET (DLF HYF IEF) MHPH 301W DAINTY 205Y (DLF HYF IEF MSUDF MDF) REMITALL ONLINE 122L
LCC 204P MERRY ME ON 704 ET (DLF HYF IEF)
TH 512X 719T PLAYMAKER 14Z (MDF)
HARVIE STREAMLINE ET 200D (DLF HYF IEF MSUDF MDF) HARVIE MS FIREFLY 24U (DLF HYF IEF)
MHPH 521X ACTION 106A (DLF HYF IEF MSUDF) DORBAY MISS AMBER 405C (DLF HYF IEF)
MHPH MS 122L AMBER 121X (DLF HYF IEF)

BW	EPDS	BW	WW	YW	MM	TM
80 lbs.		5.7	67.8	104.4	14.8	48.7

EPDS	BW	WW	YW	MM	TM
	4.8	65.7	100.7	11.2	44.1



- Production specialist
- Wide based, big hipped

Bred to Churchill Red Baron
8300F ET on April 21, 2021,
preg checked safe

Lot
7A



Lot
8

- Extra length
- Truck load of dimension

Lot 8 MHPH 420A **MARVEL** 203J {DLF HYF IEF MSUDF MDF}
PC03081820 MHPH 203J 03/02/2021 POLLED FEMALE

TH 22R 16S LAMBEAU 17Y
TH 71U 17Y MOUNTAINEER 420A {DLF HYF IEF}
 TH 7N 45P RITA 71U {DLF HYF IEF}

TH 121L 63N TUNDRA 16S
 TH 62N 3L KELSEY 22R
 NJW FHF 9710 TANK 45P {DLF HYF IEF MDF}
 TH 814H 3L RITA 7N

REMITALL-W START ME UP ET 7B {DLF HYF IEF MDF}
 RANGELINE 11Y MISS WORLD 745A
 SQUARE-D MANDATE 161X {DLF HYF IEF}
 SQUARE-D SHANIAH 6714S

TH 745A 7B START ME UP 71D
ANL 71D MARVEL 3714A 4G {DLF HYF IEF MSUDF MDF}
 WCC 161X MARVEL 3714A

Lot 8A ANL 71D **MARVEL** 3714A 4G {DLF HYF IEF MSUDF MDF}
PC03061817 KKL 4G 10/01/2019 POLLED FEMALE

REMITALL-W START ME UP ET 7B {DLF HYF IEF MDF} REMITALL-WEST MARVEL ET 76Y {DLF HYF IEF MDF}
TH 745A 7B START ME UP 71D
 RANGELINE 11Y MISS WORLD 745A

CB 57U CAN DOO 102Y {DLF HYF IEF MSUDF}
 BOYD WORLDWIDE 9050 ET {DLF HYF IEF MDF}
 RANGELINE 60S TEAR DROP 11Y

SQUARE-D MANDATE 161X {DLF HYF IEF}
WCC 161X MARVEL 3714A
 SQUARE-D SHANIAH 6714S

SQUARE-D LOGAN 209P
 REMITALL MARVEL 161P
 BBSF 610F MONARCH 79M
 MUDDY 746D MADAM 562B ET 412M

BW	EPDS	BW	WW	YW	MM	TM
79 lbs.		1.9	52.2	90.8	20.6	46.7

EPDS	BW	WW	YW	MM	TM
	2.7	51.5	84.6	17.4	43.2

- Amazing do-ability
- Graceful in motion
- Neat through her front third

Bred to Churchill Red Baron 8300F ET on March 29, 2021, preg checked safe



Lot
8A

Medonte Highlands Polled Herefords



- Impressive in her overall make up
- Maternal quality

Lot 9 MHPH 84G **NITA** 1017J {DLF HYF IEF MSUDF MDF}
PC03081799 MHPH 1017J 01/01/2021 POLLED FEMALE

KCL WPF THE PROFESSOR 7110ET {DLF HYF IEF MSUDF}
REMITALL-W RAINMAKER ET 14E {DLF HYF IEF MSUDF MDF} REMITALL-WEST MARVEL ET 76Y {DLF HYF IEF MDF}
REMITALL-W VORTEX ET 84G {DLF HYF IEF MSUDF MDF} REMITALL-WEST GAME DAY ET 74Y {DLF HYF IEF MDF}
REMITALL-WEST BELLE 36B {DLF HYF IEF MSUDF MDF} REMITALL BELLE 132U
CHURCHILL RED BULL 200Z {DLF HYF IEF MDF}
HAROLDSON'S TOTEM 200Z 5D {DLF HYF IEF MSUDF} BLAIR'S NELLIE R117 ET 5B {DLF HYF IEF}
CHULA-VISTA GINA 118G {DLF HYF IEF MSUDF MDF} BNMHPH 13P HEAT 101S {DLF HYF IEF MDF}
MHPH 101S NITA 1024B {DLF HYF IEF} MHPH MS 40U NITA 105X {DLF HYF IEF}

Lot 9A CHULA-VISTA **GINA** 118G {DLF HYF IEF MSUDF MDF}
PC03059808 CJVK 118G 18/01/2019 POLLED FEMALE

CHURCHILL RED BULL 200Z {DLF HYF IEF MDF}
HAROLDSON'S TOTEM 200Z 5D {DLF HYF IEF MSUDF} CHURCHILL SENSATION 028X {DLF HYF IEF}
BLAIR'S NELLIE R117 ET 5B {DLF HYF IEF} CHURCHILL LADY 002X ET
SHF RIB EYE M326 R117 {DLF HYF IEF}
NCX MISS JR NELLIE 528N
REMITALL PATRIOT ET 13P
ANL PBG 29F BONNIE 21P
MHPH 101S NITA 1024B {DLF HYF IEF} WLB SHAPLEY 50S 40U
MHPH MS 40U NITA 105X {DLF HYF IEF} MHPH MS 2N NITA 107T {DLF HYF IEF}

BW	EPDS	BW	WW	YW	MM	TM
82 lbs.		6.1	62.7	100.4	19.0	50.4

EPDS	BW	WW	YW	MM	TM
	3.4	53.3	81.6	25.9	52.6



- Beautiful structure
- Sleek fronted

Bred to Churchill Red Baron 8300F ET on May 2, 2021, preg checked safe

- Impressive rib shape
- Maternal punch
- Compelling profile



Lot 10 MHPH 83G **BOUNTY** 201J {DLF HYF IEF MSUDF MDF}
PC03081801 MHPH 201J 01/02/2021 POLLED FEMALE

KCLVWPF THE PROFESSOR 7110ET {DLF HYF IEF MSUDF}
REMITALL-W RAINMAKER ET 14E {DLF HYF IEF MSUDF MDF} REMITALL-WEST MARVEL ET 76Y {DLF HYF IEF MDF}
REMITALL-W WE THE NORTH ET 83G {DLF HYF IEF MSUDF MDF} REMITALL-WEST GAME DAY ET 74Y {DLF HYF IEF MDC}
REMITALL-WEST BELLE 36B {DLF HYF IEF MSUDF MDF} REMITALL BELLE 132U
R LEADER 6964
BOYD 31Z BLUEPRINT 6153 {MDF} NJW 91H 100W RITA 31Z ET
MHPH 6153 BOUNTY 219G {DLF HYF IEF MSUDF MDF} NJW 98S DURANGO 44U {DLF HYF IEF}
PCL 25Z GOLD BOUNTY 29E {DLF HYF IEF MSUDF} PCL GOLD BOUNTY 118U 157C {DLF HYF IEF}

Lot 10A MHPH 6153 **BOUNTY** 219G {DLF HYF IEF MSUDF MDF}
PC03062776 MHPH 219G 19/02/2019 POLLED FEMALE

R LEADER 6964
BOYD 31Z BLUEPRINT 6153 {MDF} NJW 91H 100W RITA 31Z ET
NJW 98S DURANGO 44U {DLF HYF IEF}
PCL 25Z GOLD BOUNTY 29E {DLF HYF IEF MSUDF} PCL GOLD BOUNTY 118U 157C {DLF HYF IEF}
HYALITE ON TARGET 936
R MISS REVOLUTION 1009
NJW 73S M326 TRUST 100W ET {DLF HYF IEF}
REMITALL RITA 91H
THM DURANGO 4037 {DLF HYF IEF}
NJW 9126J DEW DOMINO 98S {DLF HYF IEF}
MHPH 101S UMPIRE 118U {DLF HYF IEF MSUDF MDF}
BIG-GULLY 611 GOLD BOUNTY 681W {DLF HYF IEF}

BW	EPDS	BW	WW	YW	MM	TM
80 lbs.		5.1	57.9	92.0	25.5	54.5

EPDS	BW	WW	YW	MM	TM
	3.2	63.1	101.0	25.9	57.5

- Sculpted head, neck & shoulder
- Loads of middle dimension

Bred to MHPH 117E
Hobbs ET 203H on May
18, 2021,
preg checked safe



Medonte Highlands Polled Herefords



Lot
11

- Sassy in design
- Sensible in soundness

Lot 11 MHPH 83G **MELANIE** 1172J {DLF HYF IEF MSUDF MDF}
PC03081800 MHPH 1172J 17/01/2021 POLLED FEMALE

KCL WPF THE PROFESSOR 7110ET {DLF HYF IEF MSUDF}
REMITALL-W RAINMAKER ET 14E {DLF HYF IEF MSUDF MDF} REMITALL-WEST MARVEL ET 76Y
REMITALL-W WE THE NORTH ET 83G {DLF HYF IEF MSUDF MDF} REMITALL-WEST GAME DAY ET 74Y {DLF HYF IEF MDF}
REMITALL-WEST BELLE 36B {DLF HYF IEF MSUDF MDF} REMITALL BELLE 132U
TH 745A 7B START ME UP 71D
ANL 71D MELANIE 161C 186G {DLF HYF IEF}
ANL 795Y MELANIE 3756A 161C

Lot 11A ANL 71D **MELANIE** 161C 186G {DLF HYF IEF MSUDF MDF}
PC03060350 KKL 186G 05/04/2019 POLLED FEMALE

CB 57U CAN DOO 102Y {DLF HYF IEF MSUDF}
REMITALL-W START ME UP ET 7B {DLF HYF IEF MDF} REMITALL-WEST MARVEL ET 76Y {DLF HYF IEF MDF}
TH 745A 7B START ME UP 71D
RANGELINE 11Y MISS WORLD 745A
BOYD WORLDWIDE 9050 ET {DLF HYF IEF MDF}
RANGELINE 60S TEAR DROP 11Y
STAR BRIGHT FUTURE 533P ET
SQUARE-D SELINE 795S
ANL 795Y MELANIE 3756A 161C {DLF HYF IEF}
WCC 30X MELANIE 3756A
SQUARE-D 533P FUTURE 795Y {DLF HYF IEF}
SQUARE-D AXLE 30X {DLF HYF IEF}
SQUARE-D MELANIE 756S

BW	EPDS	BW	WW	YW	MM	TM
74 lbs.		2.5	48.3	72.8	19.0	43.2

EPDS	BW	WW	YW	MM	TM
	3.0	57.0	91.8	17.2	45.7



Lot
11A

- Calved at 21 months of age
- Efficient & fertile

Bred to Remitall-W Vortex ET 84G on April 10, 2021, preg checked safe

- Established heritage
- Tidy uddered
- Low maintenance type

Bred to MHPH 646D
Gunfire ET 406G on April
9, 2021, preg checked
safe



**Lot
12**

BAR-J-M BELLA 8G (DLF HYF IEF MSUDF MDF)

PC03058140 JB 8G 04/01/2019 POLLED FEMALE

NJW 73S M326 TRUST 100W ET (DLF HYF IEF)
BAR-J-M EMPIRE 6E (DLF HYF IEF MSUDF)
 BAR-J-M LADY OF THE RING 1B (DLF HYF IEF MSUDF)
 BAR-J-M GRAND SLAM 1Y (DLF HYF IEF)
BAR-J-M BELLA 7B
 BAR-J-M GOLDEN GIRL 17W

KCF BENNETT 3008 M326 (DLF HYF IEF MDF)
 NJW P606 72N DAYDREAM 73S (DLF HYF IEF)
 BAR-J-M GRAND SLAM 1Y (DLF HYF IEF)
 BAR-J-M TULIP 7T
 BNMHPH 13P HEAT 101S
 BAR-J-M KELLY 10W (DLF HYF IEF)
 GH RAMBO 279R
 GOLDEN-OAK 46B MAPLE 17M

**Lot
13**

TWIN-VIEW 80A JOANNA 80F (DLF HYF IEF MSUDF MDF)

PC03046682 TNVW 80F 02/03/2018 POLLED FEMALE

GHC CT SAMSON 76Y (DLF HYF IEF)
TWIN-VIEW 76Y PRESTIGE 80A (DLF HYF IEF MSUDF)
 LAMPORT'S D 28K TRISHA 17M

BBSF 101N WRANGLER 29W (DLF HYF IEF)
 GHC MISS LASSIE 14M
 LAMPORT'S 530G JAG 28K
 LAMPORT'S 48G TRISHA 13K
 HARVIE LADIES MAN 4L (DLF HYF IEF MDF)
 TWIN-VIEW 4L MACK DADDY 83Z (DLF HYF IEF MSUDF)
TWIN-VIEW 83Z JACINDA 16C
 TWIN-VIEW 99W2 MELINDA 50Z

TWIN-VIEW 6L MCKENZIE 101U
 MCCOY 30N APPLAUSE ET 99W (DLF HYF IEF MSUDF)
 GHC MISS BELINDA 45W

EPDS	BW	WW	YW	MM	TM
	2.6	51.0	78.1	16.1	41.6

EPDS	BW	WW	YW	MM	TM
	5.1	57.6	93.9	21.2	50.0

- Extra length
- Defined front end
- Generations of established genetics

Bred to Remitall-W Vortex
ET 84G on April 2, 2021, preg
checked safe



Medonte Highlands Polled Herefords



- Impeccable structure & udder quality
- Nice balance throughout

Bred to Remital-W Vortex ET 84G on April 11th 2021, preg checked safe

Lot 14 MHPH 118U **PEBBLES** 130F {DLF HYF IEF MSUDF MDF}
PC03045755 MHPH 130F 30/01/2018 POLLED FEMALE

BNMHPH 13P HEAT 101S (DLF HYF IEF MDF)
MHPH 101S UMPIRE 118U (DLF HYF IEF MSUDF MDF)
MHPH MS 68M NITA 1112R (DLF HYF IEF)

MHPH 521X ACTION 106A (DLF HYF IEF MSUDF)
MHPH 106A PEBBLES 131D (DLF HYF IEF MSUDF)
MHPH 203Y PEBBLES 410A (DLF HYF IEF)

REMITALL PATRIOT ET 13P
ANL PBG 29F BONNIE 21P
STAR AMERICA BNMHPH SS MKS 68M (DLF HYF IEF)
MHPH MS 29F NITA 112L (DLF HYF IEF)

TH 122 71I VICTOR 521X ET (DLF HYF IEF)
MHPH 301W DAINTY 205Y (DLF HYF IEF MSUDF MDF)
MHPH 9W YEOMAN 203Y (DLF HYF IEF)
ANL 45P PEBBLES ET 11W (DLF HYF IEF)

EPDS	BW	WW	YW	MM	TM
	2.1	46.7	68.7	25.5	48.9

Lot 15 ELM-LODGE **GRACIOUS** 1G {DLF HYF IEF MSUDF MDF}
PC03062071 TAX 1G 06/01/2019 POLLED FEMALE

CHURCHILL RED BULL 200Z (DLF HYF IEF MDF)
HAROLDSON'S TOTEM 200Z 5D (DLF HYF IEF MSUDF)
BLAIR'S NELLIE R117 ET 5B (DLF HYF IEF)

MHPH 101S UMPIRE 118U (DLF HYF IEF MSUDF MDF)
MOOREHAVEN CHEYENNE 118U 5D (DLF HYF IEF MSUDF)
MOOREHAVEN MSU20X CHEYENNE 11B (DLF HYF IEF MSUDF)

CHURCHILL SENSATION 028X (DLF HYF IEF)
CHURCHILL LADY 002X ET
SHF RIB EYE M326 R117 (DLF HYF IEF)
NCX MISS JR NELLIE 528N

BNMHPH 13P HEAT 101S
MHPH MS 68M NITA 1112R (DLF HYF IEF)
MSU XEROX 20X (DLF HYF IEF)
IVRT 83T CHEYENNE 7Z (DLF HYF IEF)

EPDS	BW	WW	YW	MM	TM
	2.6	51.3	85.5	26.2	51.9



- Interesting genetic blend
- Awesome maternal power

Bred to MHPH 646D Gunfire ET 401G on April 11, 2021, preg checked safe

- Multi dimensional
- Ease of motion



Lot 16

MHPH 14E **FANCY** 120J {DLF HYF IEF MSUDF MDF}
PC03081793 MHPH 120J 20/01/2021 POLLED FEMALE

TH 71U 719T MR HEREFORD 11X {DLF HYF IEF}
KCL WPF THE PROFESSOR 7110ET {DLF HYF IEF MSUDF} KCL 29R MARY ANNE 23G 5R ET
REMITALL-W RAINMAKER ET 14E {DLF HYF IEF MSUDF MDF} SHF WONDER M326 W18 ET {DLF HYF IEF MDC}
REMITALL-WEST MARVEL ET 76Y {DLF HYF IEF MDF} REMITALL MARVEL 78T {DLF HYF IEF}

CRR 5280
C SPECIAL EDITION 6105 ET
MF 1302 FANCY 6105 1806 ET {DLF HYF IEF MSUDF MDF}
MF 308N ADDY 1302 ET

CRR 5280
C 88X NOTICE ME 1311 ET
CRR ABOUT TIME 743 {DLF HYF IEF MDF}
MF 62J NATALIE 122L 308N

Lot 16A

MF 1302 **FANCY** 6105 1806 ET {DLF HYF IEF MSUDF MDF}
PC03073474 1806 06/04/2018 POLLED FEMALE

CRR 5280
C SPECIAL EDITION 6105 ET
C 88X NOTICE ME 1311 ET

CRR 719 CATAPULT 109 {DLF HYF IEF}
CRR 435 KELLY 178 {DLF HYF IEF}
NJW 98S R117 RIBEYE 88X ET {MDF}
C NOTICE ME ET

CRR ABOUT TIME 743 {DLF HYF IEF MDF}
MF 308N ADDY 1302 ET
MF 62J NATALIE 122L 308N

THM DURANGO 4037 {DLF HYF IEF}
CRR D03 CASSIE 206
REMITALL ONLINE 122L
MSU MISS WRANGLER 62J

BW	EPDS	BW	WW	YW	MM	TM
64 lbs.		2.3	51.7	80.3	20.8	46.7

EPDS	BW	WW	YW	MM	TM
	5.0	62.4	97.9	23.9	55.1

- Extra overall length
- Crisp lines

Bred to Remitall-W Vortex ET 84G on April 19, 2021, preg checked safe



Medonte Highlands Polled Herefords



- Stylish lady
- Generations of blended superior cow families

Lot 17 MHPH 83G **AMBER** 131J (DLF HYF IEF MSUDF MDF)
PC03081738 MHPH 131J 31/01/2021 POLLED FEMALE

REMITALL-W RAINMAKER ET 14E (DLF HYF IEF MSUDF MDF) KCL WPF THE PROFESSOR 7110ET (DLF HYF IEF MSUDF)
REMITALL-W WE THE NORTH ET 83G (DLF HYF IEF MSUDF MDF) REMITALL-WEST MARVEL ET 76Y (DLF HYF IEF MDF)
REMITALL-WEST BELLE 36B (DLF HYF IEF MSUDF MDF) REMITALL-WEST GAME DAY ET 74Y (DLF HYF IEF MDF)
REMITALL BELLE 132U

MHPH 521X ACTION 106A (DLF HYF IEF MSUDF) TH 122 71I VICTOR 521X ET (DLF HYF IEF)
SRF DESERT ROSE 106D (DLF HYF IEF MSUDF MDF) MHPH 301W DAINTY 205Y (DLF HYF IEF MSUDF MDF)
MHPH 118U AMBER 106Y (DLF HYF IEF) MHPH 101S UMPIRE 118U (DLF HYF IEF MSUDF MDF)
LCC 204P MERRY ME ON 704 ET (DLF HYF IEF)

Lot 17A SRF **DESERT ROSE** 106D (DLF HYF IEF MSUDF MDF)
PC03019888 OPHF 106D 09/01/2016 POLLED FEMALE

TH 122 71I VICTOR 521X ET (DLF HYF IEF) DRF JWR PRINCE VICTOR 71I
MHPH 521X ACTION 106A (DLF HYF IEF MSUDF) KBCR 19D DOMINETTE 122 (DLF IEF)
MHPH 301W DAINTY 205Y (DLF HYF IEF MSUDF) MHPH 102S WYATT 301W (DLF HYF IEF)
MHPH MS 101S DAINTY 123U (DLF HYF IEF)

MHPH 101S UMPIRE 118U (DLF HYF IEF MSUDF MDF) BNMHPH 13P HEAT 101S (DLF HYF IEF MDF)
MHPH 118U AMBER 106Y (DLF HYF IEF) MHPH MS 68M NITA 1112R (DLF HYF IEF)
LCC 204P MERRY ME ON 704 ET (DLF HYF IEF) REMITALL LAGRD POUNDER ET 204P
MSU BR MERRY 24K

BW	EPDS	BW	WW	YW	MM	TM
89 lbs.		7.4	61.6	101.7	23.2	54.0

EPDS	BW	WW	YW	MM	TM
	5.1	65.4	105.4	22.2	54.9



- Big barrelled
- Agile efficient beef cow

Bred to Remitall-W MHPH Justice 2H on April 4, 2021, preg checked safe

- Stylish form
- Broody appearance



Lot 18

MHPH 8300 **NESSA** 215J {DLF HYF IEF MSUDF MDF}
PC03081732 MHPH 215J 15/02/2021 POLLED FEMALE

R LEADER 6964
CHURCHILL RED BARON 8300F ET {DLF HYF IEF MSUDF MDF}
CHURCHILL LADY 500C ET

HYALITE ON TARGET 936
R MISS REVOLUTION 1009
CHURCHILL RED BULL 200Z {DLF HYF IEF MDF}
HVH OKSANA 4L 33N {DLF HYF IEF}

MHPH 521X ACTION 106A {DLF HYF IEF MSUDF}
C&T 106A NESSA 26C {DLF HYF IEF MSUDF MDF}
C&T 36N VANESSA 73U

TH 122 71I VICTOR 521X ET {DLF HYF IEF}
MHPH 301W DAINTY 205Y {DLF HYF IEF MSUDF MDF}
HF 4L BEYOND 36N
C&T 2J VALDEZ 67M

Lot 18A

C&T 106A **NESSA** 26C {DLF HYF IEF MSUDF MDF}
PC03012571 VOB 26C 05/03/2015 POLLED FEMALE

TH 122 71I VICTOR 521X ET {DLF HYF IEF}
MHPH 521X ACTION 106A {DLF HYF IEF MSUDF}
MHPH 301W DAINTY 205Y {DLF HYF IEF MSUDF MDF}

DRF JWR PRINCE VICTOR 71I
KBCR 19D DOMINETTE 122 {DLF IEF}
MHPH 102S WYATT 301W {DLF HYF IEF}
MHPH MS 101S DAINTY 123U {DLF HYF IEF}

HF 4L BEYOND 36N
C&T 36N VANESSA 73U
C&T 2J VALDEZ 67M

FCC 60G MADDUX 4L
MISS 87D FORTUNE 707B 67J
C&T 20X KRUIZE 2J
BLAIR-ATHOL RIVAL ROSE 66G

BW	EPDS	BW	WW	YW	MM	TM
87 lbs.		4.6	74.8	120.3	30.1	67.5

EPDS	BW	WW	YW	MM	TM
	5.8	62.2	95.1	18.6	49.7

- Awesome in production
- Sound structure

Bred to Remital-W MHPH
Justice 2H on March 26, 2021,
preg checked safe





Ref
B

REF REMITALL-W **VORTEX** ET 84G (DLF HYF IEF MSUDF MDF)

B PC03061699 REM 84G 22/02/2019 POLLED MALE

TH 71U 719T MR HEREFORD 11X (DLF HYF IEF)
 KCL WPF THE PROFESSOR 7110ET (DLF HYF IEF MSUDF) KCL 29R MARY ANNE 23G 5R ET
REMITALL-W RAINMAKER ET 14E (DLF HYF IEF MSUDF MDF) SHF WONDER M326 W18 ET (DLF HYF IEF MDC)
 REMITALL-WEST MARVEL ET 76Y (DLF HYF IEF MDF) REMITALL MARVEL 78T (DLF HYF IEF
 SHF WONDER M326 W18 ET (DLF HYF IEF MDC)
 REMITALL-WEST GAME DAY ET 74Y (DLF HYF IEF MDC) REMITALL MARVEL 78T (DLF HYF IEF)
REMITALL-WEST BELLE 36B (DLF HYF IEF MSUDF MDF) REMITALL FIRST CLASS ET 113R
 REMITALL BELLE 132U REMITALL BELLE 160R (DLF HYF IEF MSUDF)

BW	EPDS	BW	WW	YW	MM	TM
85 lbs.		5.8	54.4	93.0	24.0	51.2

Owned with Remital West



Lot
19

Lot 19 MHPH 84G **HARLEY** 1012J (DLF HYF IEF MSUDF MDF)
PC03081740 MHPH 1012J 01/01/2021 POLLED FEMALE

BW	EPDS	BW	WW	YW	MM	TM
84 lbs.		7.2	63.4	108.9	31.5	63.2

- Jaw dropper
- Snappy front end
- An abundance of high end genetics
- Maternal sister topped last years sale selling to Ye Old McDonald Farm, Michigan, US

Terms to be announced

REMITALL-W RAINMAKER ET 14E (DLF HYF IEF MSUDF MDF)
REMITALL-W VORTEX ET 84G (DLF HYF IEF MSUDF MDF)
 REMITALL-WEST BELLE 36B (DLF HYF IEF MSUDF MDF)
 C MILES MCKEE 2103 ET (MDF)
SULL HARLEY 6541D ET (DLF HYF IEF MSUDF MDF)
 LCC TWO TIMIN 438 ET

KCL WPF THE PROFESSOR 7110ET (DLF HYF IEF MSUDF)
 REMITALL-WEST MARVEL ET 76Y (DLF HYF IEF MDF)
 REMITALL-WEST GAME DAY ET 74Y (DLF HYF IEF MDC)
 REMITALL BELLE 132U
 NJW 98S R117 RIBEYE 88X ET (MDF)
 C NOTICE ME ET
 REMITALL ONLINE 122L
 RST ROF REBA 28H



Sire of MHPH 1012J
Remitall-W Vortex ET 84G



Maternal sister to MHPH 1012J
Previous high seller MHPH 102F



Lot
20

Lot
20

MHPH 84G **FLAME** 1082J (DLF HYF IEF MSUDF MDF)

PC03081731 MHPH 1082J 08/01/2021 POLLED FEMALE

REMITALL-W RAINMAKER ET 14E (DLF HYF IEF MSUDF MDF) KCL WPF THE PROFESSOR 7110ET (DLF HYF IEF MSUDF)
 REMITALL-W VORTEX ET 84G (DLF HYF IEF MSUDF MDF) REMITALL-WEST MARVEL ET 76Y (DLF HYF IEF MDF)
 REMITALL-WEST BELLE 36B (DLF HYF IEF MSUDF MDF) REMITALL-WEST GAME DAY ET 74Y (DLF HYF IEF MDC)
 REMITALL BELLE 132U

JPH 83T BENCHMARK 127Y (DLF HYF IEF) WLB ELI 10H 83T (DLF HYF IEF)
 JJPH 127Y 861U **FLAME 419B** (DLF HYF IEF) JJPH 824H 36N TEMPTATION 804U (DLF HYF IEF)
 JJPH 21M **FLAME 861U** (DLF HYF IEF) REMITALL NORTHERNER 19N
 HINTERLAND TRUE TEMPER 21M

BW	EPDS	BW	WW	YW	MM	TM
86 lbs.		5.2	54.4	89.1	17.4	44.6

- Sturdy from the ground up
- Noteworthy length and body



Sire of MHPH 1082J
Remitall-W Vortex ET 84G



Lot
21

Lot
21

MHPH 84G **LADY** 106J (DLF HYF IEF MSUDF MDF)

PC03081746 MHPH 106J 06/01/2021 POLLED FEMALE

BW	EPDS	BW	WW	YW	MM	TM
81 lbs.		4.0	57.7	103.6	29.1	58.0

- Flawlessly constructed
- An abundance of cow power
- Geared for the future

REMITALL-W RAINMAKER ET 14E (DLF HYF IEF MSUDF MDF) KCL WPF THE PROFESSOR 7110ET (DLF HYF IEF MSUDF)
 REMITALL-W VORTEX ET 84G (DLF HYF IEF MSUDF MDF) REMITALL-WEST MARVEL ET 76Y (DLF HYF IEF MDF)
 REMITALL-WEST BELLE 36B (DLF HYF IEF MSUDF MDF) REMITALL-WEST GAME DAY ET 74Y (DLF HYF IEF MDC)
 REMITALL BELLE 132U
 R LEADER 6964 HYALITE ON TARGET 936
 R MISS REVOLUTION 1009
MKS 6964 4D LEADING LADY 6F (DLF HYF IEF MSUDF MDF) CRR 719 CATAPULT 109 (DLF HYF IEF)
 MKS 109 221 MERRY GOLD 4D RJL LCC JUST BEING MERRY 221



Sire of MHPH 106J
Remitall-W Vortex ET 84G



Lot 22

MHPH 203D BAMBI 101J (DLF HYF IEF MSUDF MDF)

PC02987562 MHPH 101J 01/01/2021 POLLED FEMALE

NJW 135U 10Y HOMETOWN 27A
 NJW 76S 27A LONG RANGE 203D ET
 NJW 55N STARDUST 76S

NJW 73S W18 HOMETOWN 10Y ET
 NJW 4037 34S DURANGO VACA 135U
 NJW BW TRAILDUST 161L
 NJW 57G SPIRIT QUEEN 55N ET

TDP CROSSOVER Z400
 RVP Z400 FOREVER 107F
 RVP 100X BAMBI 94B

TH 133U UPGRADE 69X
 ASH LIL PEANUT 203P₁
 LW 55S DEPUTY 011X ET
 SRF RACHEL 4R 304Y

BW	EPDS	BW	WW	YW	MM	TM
78 lbs.		3.7	70.3	122.1	32.9	68.1

- Dazzling physical form
- Superior cow power





Lot
23

Lot 23 MHPH 36G **UNIQUE** 208J (DLF HYF IEF MSUDF MDF)
PC03084662 MHPH 208J 08/02/2021 POLLED FEMALE

BW	EPDS	BW	WW	YW	MM	TM
86 lbs.		6.0	66.5	112.6	35.4	68.7

- Exceptional hip and top
- Excessive length from tail to nose
- Elegant front end

HAROLDSON'S UPGRADE T100 33D
HAROLDSON'S UNITED 33D 36G
HAROLDSON'S WLC MIRA ET 52B

SHF TAHOE R117 T100
MOHICAN MISSEY 93W
NJW 73S W18 HOMETOWN 10Y ET
HAROLDSON'S 37H MIRA ET 62K

MHPH 521X ALLIANCE 203A
HARVIE AD MS UNIQUE 137C
HARVIE OVHF MS UNIQUE 80W

TH 122 711 VICTOR 521X ET
MHPH MS 68M NITA 112R
HARVIE RAFTSMAN 16R
BBSF 100L UNIQUE ET 131R



Medonte Highlands Polled Herefords



Dam of KJ MHPH RW 364C **MEDIA** 240J ET
KJ BJ DWE 686Z **SALSA** 364C ET



Dam of KJ MHPH RW 364C **MEDIA** 240J ET
KJ BJ DWE 686Z **SALSA** 364C ET Fall of 2017



Sire of KJ MHPH RW 364C **MEDIA** 240J ET
LOEWEN **GENESIS** G16 ET



Lot
24

**Lot
24**

KJ MHPH RW 364C **MEDIA** 240J ET (DLF HYF IEF MSUDF MDF)
PC03083273 240J 02/01/2021 POLLED MALE

NJW 79Z Z311 ENDURE 173D ET (DLF HYF IEF MSUDF MDF) BW 91H 100W RITA 79Z ET
LOEWEN GENESIS G16 ET MSU TCF REVOLUTION 4R (DLF HYF IEF)
 LOEWEN 77 48 MISS 344N 4RB42ET PCR JACKLYN NIKOLE 344N
 CRR 719 CATAPULT 109 (DLF HYF IEF MDF) TH 122 71I VICTOR 719T (DLF HYF IEF MDF)
KJ BJ DWE 686Z SALSA 364C ET CRR 4037 ECLIPSE 808
 KJ 968R ZSA ZSA 686Z ET MSU TCF REVOLUTION 4R (DLF HYF IEF)
 KJ 2403 ROBINETTE 968R (DLF HYF IEF)



BW	EPDS	BW	WW	YW	MM	TM
76 lbs.		3.1	69.3	110.9	32.3	67.0

- Fresh genetic opportunity!!!
- Wide base
- Desirable foot structure
- Titanic topped
- Magnificent rump & stiff expression
- Impressive herd bull characteristics
- Truck load of capacity
- Tremendous shoulder design
- Dam is noteworthy in production
- Total package
- Homozygous polled

Terms to be announced
Owned with Jensen Brothers and Roots & Wings Farm



Medonte Highlands Polled Herefords



Ref REMITALL-W MHPH **JUSTICE** 2H {DLF HYF IEF MSUDF MDF}
C PC03071320 REM 2H 01/01/2020 POLLED MALE

BOYD BANKER 0015 ET
 REMITALL-W 50 SHADES ET 12C {DLF HYF IEF MSUDF} REMITALL MARVEL 78T {DLF HYF IEF}
 REMITALL-W CONNECTED ET 24E {DLF HYF IEF MSUDF} SHF RIB EYE M326 R117 {DLF HYF IEF}
 REMITALL-WEST YELLOW ROSE 2Y {DLF HYF IEF} DORBAY MISS WHITNEY 411W {DLF HYF IEF}

TH 71U 719T MR HEREFORD 11X {DLF HYF IEF}
 KCL WPF THE PROFESSOR 7110ET {DLF HYF IEF MSUDF} KCL 29R MARY ANNE 23G 5R ET
 REMITALL-W BELLE ET 45F {DLF HYF IEF MSUDF MDF} REMITALL-WEST GAME DAY ET 74Y {DLF HYF IEF MDF}
 REMITALL-WEST BELLE 36B {DLF HYF IEF MSUDF MDF} REMITALL BELLE 132U

BW	EPDS	BW	WW	YW	MM	TM
78 lbs.		3.0	59.9	93.7	27.8	57.8

Owned with Remitall West



Ref MHPH 117E **HOBBS** ET 203H {DLF HYF IEF MSUDF MDF}
D PC03072328 MHPH 203H 03/02/2020 POLLED MALE

CHURCHILL STUD 3134A
 MHPH 3134 EVOLUTION 117E {DLF HYF IEF MSUDF MDF} CHURCHILL LADY 002X ET
 MHPH MS 68M NITA 1112R {DLF HYF IEF MDF} NJW 73S W18 HOMETOWN 10Y ET {DLF HYF IEF MDF}
 MHPH MS 101S DAINTY 123U {DLF HYF IEF}

MHPH 102S WYATT 301W {DLF HYF IEF} MHPH 13P STETSON 102S {DLF HYF IEF MSUDF}
 MHPH 301W DAINTY 205Y {DLF HYF IEF MSUDF MDF} MHPH MS 2N PAGE 122S {DLF HYF IEF}
 MHPH MS 101S DAINTY 123U {DLF HYF IEF} BNMHPH 13P HEAT 101S {DLF HYF IEF MDF}
 DURALTA 80U DAINTY 63M

BW	EPDS	BW	WW	YW	MM	TM
80 lbs.		2.8	53.6	86.0	25.9	52.7

Owned with Dorbay Polled Herefords



Ref MHPH 646D **GUNFIRE** ET 401G {DLF HYF IEF MSUDF MDF}
E PC03060930 MHPH 401G 01/04/2019 POLLED MALE

NJW 98S R117 RIBEYE 88X ET {MDF} SHF RIB EYE M326 R117 {DLF HYF IEF}
 CHURCHILL ROCK 646D ET NJW 9126J DEW DOMINO 98S {DLF HYF IEF}
 SR CCC LADYSPORT 2205 Z ET THM DURANGO 4037 {DLF HYF IEF}
 NJW BW LADYSPORT DEW 78P ET {DLF HYF IEF}

MHPH 102S WYATT 301W {DLF HYF IEF} MHPH 13P STETSON 102S {DLF HYF IEF MSUDF}
 MHPH 301W DAINTY 205Y {DLF HYF IEF MSUDF MDF} MHPH MS 2N PAGE 122S {DLF HYF IEF}
 MHPH MS 101S DAINTY 123U {DLF HYF IEF} BNMHPH 13P HEAT 101S {DLF HYF IEF MDF}
 DURALTA 80U DAINTY 63M

BW	EPDS	BW	WW	YW	MM	TM
82 lbs.		2.8	58.2	97.4	25.7	54.8

Owned with Sinnibar Stock Farm

Julia is a very well made female out of the renowned "Nita" cow family that is so prominent in the Medonte program. Study her pedigree and notice that her background is filled with top notch sires and dams. Her sire, Air Miles, is a bull that we used heavily and then sold. What a mistake, we should have kept him. This calf will be highly maternal and should make a great cow. Balanced EPD's and is guaranteed 100% that she is free of all known present day genetic defects.



Lot 25

Lot 25 CHULA-VISTA **JULIA** 101J {DLF HYF IEF MSUDF MDF}

PC03083179 CJVK 101J 01/01/2021 POLLED FEMALE

MHPH 101S UMPIRE 118U (DLF HYF IEF MSUDF MDF)
MHPHCJVK 118U AIR MILES 128E (DLF HYF IEF MSUDF)
 RVP 100W BELIEVE ET 16B (DLF HYF IEF)

BNMHPH 13P HEAT 101S (DLF HYF IEF MDF)
MHPH 101S NITA 1024B (DLF HYF IEF)
 MHPH MS 40U NITA 105X (DLF HYF IEF)

BNMHPH 13P HEAT 101S (DLF HYF IEF MDF)
 MHPH MS 68M NITA 1112R (DLF HYF IEF)
 NJW 73S M326 TRUST 100W ET (DLF HYF IEF)
 RVP 36N TOUCH OF GOLD ET 10T (DLF HYF IEF)

REMITALL PATRIOT ET 13P
 ANL PBG 29F BONNIE 21P
 WLB SHAPLEY 50S 40U
 MHPH MS 2N NITA 107T (DLF HYF IEF)

BW	EPDS	BW	WW	YW	MM	TM
86 lbs.		3.6	54.0	85.9	21.0	48.0

Lot 26 CHULA-VISTA **JESSI** 208J {DLF HYF IEF MSUDF MDF}

PC03083185 CJVK 208J 08/02/2021 POLLED FEMALE

MHPH 101S UMPIRE 118U (DLF HYF IEF MSUDF MDF)
MHPHCJVK 118U AIR MILES 128E (DLF HYF IEF MSUDF)
 RVP 100W BELIEVE ET 16B (DLF HYF IEF)

ANL C HAR T100 TAHOE 86 ET 23B (DLF HYF IEF MSUDF MDF)
CHULA-VISTA ELLIE 107E (DLF HYF IEF MSUDF)
 STONEWOOD MS SUPREME 3A

BNMHPH 13P HEAT 101S (DLF HYF IEF MDF)
 MHPH MS 68M NITA 1112R (DLF HYF IEF)
 NJW 73S M326 TRUST 100W ET (DLF HYF IEF)
 RVP 36N TOUCH OF GOLD ET 10T (DLF HYF IEF)

SHF TAHOE R117 T100 (DLF HYF IEF MSUDF)
 ANL 7N MAPLE 86R (DLF HYF IEF)
 LAMBERT REMEDY 2030 75R (DLF HYF IEF)
 STONEWOOD SUPREME 11X

BW	EPDS	BW	WW	YW	MM	TM
89 lbs.		4.9	62.0	100.1	26.4	57.4

This February calf is a grand daughter to our foundation cow that we purchased from Matt Leahy. This cow family never misses. This calf's dam has a beautiful square udder with plenty of milk. Jessi is very well made and will make an exceptional cow with a balanced EPD profile. Buy her with confidence!



Lot 26

Chula Vista Polled Herefords



Want to start a new cow family? Well, here she is. A royally bred female out of a big cow we purchased from Medonte. This calf exhibits visual attractiveness, high performance, balanced EPD's and will be in the hunt. You will easily find her on sale day. She really is a very good investment.

Lot 27 CHULA-VISTA **JUDY** 112J {DLF HYF IEF MSUDF MDF}
PC03083181 CJVK 112J 12/01/2021 POLLED FEMALE

MHPH 101S UMPIRE 118U (DLF HYF IEF MSUDF MDF)
MHPHCJVK 118U AIR MILES 128E (DLF HYF IEF MSUDF)
RVP 100W BELIEVE ET 16B (DLF HYF IEF)

BNMHPH 13P HEAT 101S (DLF HYF IEF MDF)
MHPH MS 68M NITA 1112R (DLF HYF IEF)
NJW 73S M326 TRUST 100W ET (DLF HYF IEF)
RVP 36N TOUCH OF GOLD ET 10T (DLF HYF IEF)

REMITALL PATRIOT ET 13P
ANL PBG 29F BONNIE 21P
JUSTAMERE 64L SHOWTIME 829T (DLF HYF IEF)
LEVELDALE WILDCAT 5T 29W (DLF HYF IEF)

BNMHPH 13P HEAT 101S (DLF HYF IEF MDF)
MHPH 101S WILDFIRE 101A (DLF HYF IEF)
LEVELDALE WILDFIRE 829T 17Y (DLF HYF IEF)

Lot 28 CHULA-VISTA LIAN MOR **JILL** 111J {DLF HYF IEF MSUDF MDF}
PC03083180 CJVK 111J 11/01/2021 POLLED FEMALE

MHPH 101S UMPIRE 118U (DLF HYF IEF MSUDF MDF)
MHPHCJVK 118U AIR MILES 128E (DLF HYF IEF MSUDF)
RVP 100W BELIEVE ET 16B (DLF HYF IEF)

BNMHPH 13P HEAT 101S (DLF HYF IEF MDF)
MHPH MS 68M NITA 1112R (DLF HYF IEF)
NJW 73S M326 TRUST 100W ET (DLF HYF IEF)
RVP 36N TOUCH OF GOLD ET 10T (DLF HYF IEF)

RVP STAR 533P CAN-AM ET 57U
XLP 57U REESE 5A
HAROLDSON'S JVJ REESE 19D 5S (DLF HYF IEF)

STAR BRIGHT FUTURE 533P ET
STAR BONNIE BETH 54N
NJW 1Y WRANGLER 19D (MDF)
HAROLDSON'S REESE 10H 97M

BW	EPDS	BW	WW	YW	MM	TM
87 lbs.		3.9	59.8	92.5	22.2	52.1

BW	EPDS	BW	WW	YW	MM	TM
88 lbs.		4.6	57.4	89.1	24.1	52.8



A really good female out of the repeat high performance "Reese" cow that Wally Pugh and I purchased from XLP. Again, balanced EPD's, visually attractive, good performance and guaranteed free of all present day known genetic defects.

Owned with
Lian Mor Polled Herefords

We think, as some others do, that this is our feature heifer for Autumn Alliance 2021. Her granddam was our pick from the EJM dispersal a few years ago. This heifer is moderately framed with balance and depth of rib and extension through her front. She like her mother is easy doing type and shows a low birth weight number with higher than average carcass data numbers. This heifer was marked to remain in the herd and would have if one of our other sale heifers did not slip her early service. Take a look on sale day!

Exposed to PCL A191 Grey Goose 42G from March 26 to July 12, 2021. Observed bred April 13, 2021



Lot 29

Lot 29 LIAN 32D **HENRIETTA** 204H {DLF HYF IEF MSUDF MDF} PC03072487 LMPH 204H 04/02/2020 POLLED FEMALE

NJW 73S W18 HOMEGROWN 8Y ET (DLF HYF IEF MDC) SHF WONDER M326 W18 ET (DLF HYF IEF MDC)
 PCL 8Y DRIFTER 32D (DLF HYF IEF MDC) NJW P606 72N DAYDREAM 73S (DLF HYF IEF)
 PCL DAHLILA 521X 30Z (DLF HYF IEF) TH 122 711 VICTOR 521X ET (DLF HYF IEF)
 HAROLDSON'S DAHLILA T100 97X (DLF HYF IEF)
 NJW 73S M326 TRUST 100W ET (DLF HYF IEF) KCF BENNETT 3008 M326 (DLF HYF IEF MDF)
 LIAN 100W BIANCA 220B (DLF HYF IEF MSUDF) NJW P606 72N DAYDREAM 73S (DLF HYF IEF)
 EJM MISS TORI 101N 30T BLAIR-ATHOL 13K MAJOR 101N (DLF HYF IEF)
 EJM MISS VICTORIA 33J

EPDS	BW	WW	YW	MM	TM
	2.4	43.5	75.4	27.1	48.9

Lot 30 LIAN 245F **HOLLYHOCK** 122H {DLF HYF IEF MSUDF MDF} PC03070018 LMPH 122H 22/01/2020 POLLED FEMALE

R LEADER 6964 HYALITE ON TARGET 936
 R MISS REVOLUTION 1009
 HARVIE OVHF CONCEPT ET 245F (DLF HYF IEF MSUDF MDF) H/TSR/CHEZ/FULL THROTTLE ET
 NEXT GEN RIESLING 295 ET STAR SPIRIDGE KESSEY 321L ET (DLF HYF IEF)
 BLAIR-ATHOL 80P CONTENDER 56W (DLF HYF IEF) LAGRAN RELOAD 80P ET (DLF HYF IEF)
 BLAIR-ATHOL 56W TISKET 83A WILGOR 47K DANCETTE 37H 41N
 BLAIR-ATHOL 13K MELBA MODE 95S BLAIR-ATHOL 65F ON LINE 13K
 WTK 75A MELBA 132C

EPDS	BW	WW	YW	MM	TM
	2.2	60.7	99.6	15.7	46.1

Spring of 2020 and no school due to the pandemic! This is one of the cattle our grand children decided to halter break and brush. Hollyhock was only 67 pounds at birth but has above average weaning and yearling numbers. You will love the extra pigment in this one! Her mom has a full brother to her this year and is one of our top bull calves. We had a chance to use some semen from Concept 245F and we are sure glad we did. Two of our top 2021 heifer calves are also sire by Concept. Not to forget about her dam; she has continued to do a great job here since we purchased her from Blair Athol as a two-year old.

Exposed to PCL A191 Grey Goose 42G from March 26 to July 12, 2021. Observed bred April 20, 2021.



Lot 30

Lian Mor Polled Herefords



Hazel's sire Manning is a bull we used for some carcass improvement and to reduce the Birth weight EPD on selected cows in our herd. He did it on Hazel with her 0.7 Birth Weight EPD and a above average Marbling EPD. Hazel's mother is a large framed Action daughter with a super udder. Hazel is more moderately framed than her dam but still has the size and look to be a great mother. We decided this year to use our heifer bull on all our heifers. Goose has a low birth weight and we do have some calves (from 2-year old's) of his from last year.

Owned with Chula Vista Polled Herefords

Exposed to PCL A191 Grey Goose 42G from March 26 to July 12, 2021. Observed bred April 16, 2021

Lot
31

Lot 31 LIAN CHULAVISTA Z22 **HAZEL** 105H {DLF HYF IEF MSUDF MDF}
PC03071405 LMPH 105H 05/01/2020 POLLED FEMALE

SHF WONDER M326 W18 ET (DLF HYF IEF MDC)
SHF MANNING W18 Z22 (DLF HYF IEF MSUDF MDF)
SHF PROGRESS T148

KCF BENNETT 3008 M326 (DLF HYF IEF MDF)
SHF GOVERNESS 236G L37
SHF PROGRESS P20
SHF MISS M326 R38 ET

MHPH 521X ACTION 106A (DLF HYF IEF MSUDF)
HDB 106A JOY 301C
HDB 46X'S JOY 334A (DLF HYF IEF)

TH 122 711 VICTOR 521X ET (DLF HYF IEF)
MHPH 301W DAINTY 205Y (DLF HYF IEF MSUDF MDF)
MCCOY 60U DRIVER 46X (DLF HYF IEF)
HDB 950R'S ZABRINA 345T

EPDS	BW	WW	YW	MM	TM
	0.6	48.7	70.5	28.3	52.7

Lot 32 LIAN 6153 BP **SCARLET** 205H {DLF HYF IEF MSUDF MDF}
PC03072488 LMPH 205H 05/02/2020 POLLED FEMALE

R LEADER 6964
BOYD 31Z BLUEPRINT 6153 (MDF)
NJW 91H 100W RITA 31Z ET

HYALITE ON TARGET 936
R MISS REVOLUTION 1009
NJW 73S M326 TRUST 100W ET (DLF HYF IEF)
REMITALL RITA 91H

PCL HOMEGROWN BALANCE 8Y 33B (DLF HYF IEF MSUDF MDC)
PCL 33B SCARLET 87F
PCL SCARLET 118U 151B

NJW 73S W18 HOMEGROWN 8Y ET (DLF HYF IEF MDC)
HAROLDSON'S CARLAT 100 27X (DLF HYF IEF)
MHPH 101S UMPIRE 118U (DLF HYF IEF MSUDF MDF)
PCL SCARLET 12R ET 50Y (DLF HYF IEF)

EPDS	BW	WW	YW	MM	TM
	5.7	56.7	92.9	27.1	55.5



Scarlet is the only Blueprint that we have had at Lian Mor. We purchased the breeding in dam from Phantom Creek Livestock. She carries some Umpire in her pedigree which likely accounts for the very good udder on Scarlet's dam. Her Pedigree also traces back to C&T 4G Scarlet 17K. Very feminine heifer with a great front end.

Exposed to PCL A191 Grey Goose 42G from March 26 to July 12, 2021. Observed bred May 5, 2021

Lot
32

Heidi is one of those heifers that continues to climb up the depth chart. She is a good example along with LMPH 204H of the kind of cattle that Drifter 32D produced while he was at Lian Mor. He was likely one of the top breeding bulls we used at our farm. The daughters have tight balanced udders with lots of milk. Heidi descends from the Lassie 50M cow that was one of our top cows for many years and was a top MPI cow during her stay at Lian Mor. Heidi's dam is a Major daughter and we all know how they produce. Her 2021 steer calf is the top performing calf at our farm. Heidi is the youngest of all our sale heifers so do not forget to have a good look at her!

Exposed to PCL A191 Grey Goose 42G from March 26 to July 12, 2021. Observed Bred April 26, 2021



Lot 33

Lot 33

LIAN 32D **HEIDI** 221H (DLF HYF IEF MSUDF MDF)
PC03072495 LMPH 221H 21/02/2020 POLLED FEMALE

- NJW 73S W18 HOMEGROWN 8Y ET (DLF HYF IEF MDC)
- NJW P606 72N DAYDREAM 73S (DLF HYF IEF)
- TH 122 71I VICTOR 521X ET (DLF HYF IEF)
- HAROLDSON'S DAHLILA T100 97X (DLF HYF IEF)
- BLAIR-ATHOL 65F ON LINE 13K
- BLAIR-ATHOL 25C AMIGA 20K
- GHC KEYMAN 36F
- GHC MISS CARLA 12K
- PCL 8Y DRIFTER 32D (DLF HYF IEF MDC)
- PCL DAHLILA 521X 30Z (DLF HYF IEF)
- BLAIR-ATHOL 13K MAJOR 101N (DLF HYF IEF)
- LIAN 101N DEANNA 116D (DLF HYF IEF)
- GHC MISS LASSIE 50M

EPDS	BW	WW	YW	MM	TM
	0.8	45.3	72.6	28.2	50.9



PCL A191 Grey Goose 42G, service sire to Lian Mor bred heifers.



Dam of LARN 104H
 Harvie OVHF Riesling ET 3F
 104H, a Belle Air daughter, is the first natural calf of Harvie OVHF Riesling ET 3F. 3F was 2018 Agribition Reserve Champion female, 2019 Royal Winter Fair Reserve Champion Female and National Junior Beef Heifer show Champion Hereford heifer. With the exception of a little extra colour, 104H is a carbon copy of her mother. Flawless in her phenotype, genetically current, and an EPD profile that is hard to match.
Bred April 23, 2021 to Double-H VLE OC Exclusive 302H (NJW Endure x Mr. Hereford 11X 2018 Royal Reserve Champion Female); confirmed safe in calf.
 Show rights reserved through Agribition.
 Owned with Venture Livestock and Otter Creek Farms

Lot
34

Lot 34 DOUBLE-H VLE OCF **RIESLING 104H**
 C03077774 LARN 104H 04/01/2020 HORNED FEMALE

BAR S LHF 028 240
BR BELLE AIR 6011
 BR BELLE 4082 ET

R LEADER 6964
HARVIE OVHF RIESLING ET 3F (DLF HYF IEF MSUDF)
 NEXT GEN RIESLING 295 ET

CHURCHILL SENSATION 028X (DLF HYF IEF)
 CHURCHILL LADY 078X
 GOLDEN-OAK OUTCROSS 18U (DLF HYF IEF)
 BR CSF BRIELLE 8052 ET

HYALITE ON TARGET 936
 R MISS REVOLUTION 1009
 H/TSR/CHEZ/FULL THROTTLE ET
 STAR SPIRIDGE KESSEY 321L ET (DLF HYF IEF)

Lot 35 **PREGNANT RECIPIENT**
 NJW 79Z Z311 ENDURE 173D ET X RVP 122L VICTORIA ET 74A

KCF BENNETT ENCORE Z311 ET (DLF HYF IEF)
NJW 79Z Z311 ENDURE 173D ET (DLF HYF IEF MSUDF MDF)
 BW 91H 100W RITA 79Z ET

REMITALL ONLINE 122L
RVP 122L VICTORIA ET 74A (DLF HYF IEF)
 LAGRAND VICTORIA 37R ET (DLF HYF IEF)

SCHU-LAR ON TARGET 22S
 KCF MISS REVOLUTION X338 ET
 NJW 73S M326 TRUST 100W ET (DLF HYF IEF)
 REMITALL RITA 91H

REMITALL EMBRACER 8E
 REMITALL CATALINA 24H
 NS KENO 00S
 JJD VICTORIA GOLD 2042 ET

EPDS	BW	WW	YW	MM	TM
4.4	70.8	115.4	33.0	68.4	

PE	BW	WW	YW	MM	TM
4.6	66.0	112.6	23.4	56.3	



74A is an Online daughter and was our pick several years ago from River Valley. An absolute tank of a cow that has added growth and dimension to her calves. Flushed to Endure, the resulting calf combines the best of new and old genetics and will be an exciting prospect with an impressive EPD profile.

Calving due date of February 18, 2022. Recipient is a purebred Hereford 3 year old cow, tag 21.



Sire of pregnancy & service sire to Lot 36A
 NJW 79Z Z311 Endure 173D ET

Lot
35

Selling choice of lots 36A & 36B

119E is a super sound, hassle-free, functional young cow just in her prime. Her 2021 MHPH RDF Gibson heifer calf is being retained to carry on the Vaca family.

Bred May 15, 2021 to NJW 79Z Z311 ENDURE 173D ET; confirmed safe in calf and vet favours a heifer calf



Lot 36A

Lot 36A BRENDALE 13X **VACA** ET 119E
 PC03055696 TGPH 119E 19/01/2017 POLLED FEMALE

- MSU TCF REVOLUTION 4R (DLF HYF IEF)
- KJ 968R POLLED SOLUTION 668ZET** (DLF HYF IEF)
- KJ 2403 ROBINETTE 968R (DLF HYF IEF)
- THM DURANGO 4037 (DLF HYF IEF)
- NJW 45R 4037 VACA 13X** (DLF HYF IEF)
- NJW 80L PRAIRIE DEW 45R ET
- FELTONS LEGEND 242
- MSU TCF RACHAEL ET 54N (DLF HYF IEF)
- ALLENDALE ROBIN HOOD
- MARK DOMETTE MR 2403
- CS BOOMER 29F (DLF HYF IEF)
- THM 7085 VICTRA 9036 (DLF HYF IEF)
- RU 20X BOULDER 57G (DLF HYF IEF)
- NJW 12E PRAIRIE 80L (DLF HYF IEF)

EPDS	BW	WW	YW	MM	TM
	3.0	54.6	82.9	18.7	46.0

Lot 36B DOUBLE-H **VACA** 228H
 PC03077773 LARN 228H 28/02/2020 POLLED FEMALE

- ECR WHO MAKER 210 ET (DLF HYF IEF)
- K CARTEL 708 ET**
- SULL TCC HARLEY 4069B ET
- KJ 968R POLLED SOLUTION 668ZET (DLF HYF IEF)
- BRENDALE 13X VACA ET 119E**
- NJW 45R 4037 VACA 13X (DLF HYF IEF)
- DKF RO CASH FLOW 0245 ET
- RV GOLDEN LADY 5064
- C MILES MCKEE 2103 ET (MDF)
- LCC TWO TIMIN 438 ET
- MSU TCF REVOLUTION 4R (DLF HYF IEF)
- KJ 2403 ROBINETTE 968R (DLF HYF IEF)
- THM DURANGO 4037 (DLF HYF IEF)
- NJW 80L PRAIRIE DEW 45R ET

EPDS	BW	WW	YW	MM	TM
	3.6	55.5	90.3	27.2	55.0

Selling choice of lots 36A & 36B

228H is plain and simply a brood cow in the making. Wide muzzled, huge capacity, huge bone, and the potential for an udder just like her mom's. She is mated safe to the homo polled, dark cherry red Perfecto bull and confirmed to be carrying a heifer calf. If temperament is on your list of must-haves, this one can also double as a house pet!

Bred May 25, 2021 to BG LCC 11B Perfecto 84F (sexed heifer semen); confirmed safe in calf



Lot 36B



The Cartel x Robinhood mating has exceeded our expectations and we offer this heifer for sale only because we have retained a 2020 model full sister. The mother cow is an 11 year old workhorse that continues to produce and asks nothing in return. 120J possesses the big middle and sleek front end that we have come to expect from the Cartel heifers, while remaining sound, well balanced and extremely attractive. This one is a serious candidate for Bonanza next summer; Katie has her puppy dog quiet and the work is all done for you.

Lot 37

DOUBLE-H **BELLA** 120J

PC03081866 LARN 120J 20/01/2021 POLLED FEMALE

K CARTEL 708 ET

ECR WHO MAKER 210 ET (DLF HYF IEF)
SULL TCC HARLEY 4069B ET

DKF RO CASH FLOW 0245 ET
RV GOLDEN LADY 5064
C MILES MCKEE 2103 ET (MDF)
LCC TWO TIMIN 438 ET

PORTER'S RH BELLA 17X

ALLENDALE ROBIN HOOD
PORTER'S 19H BELLEVEGAS 7U (DLF HYF IEF)

KOANUI REBEL Q81
ALLENDALE FANCY U5
FHF 8403 STARBUCK 19H
PORTER'S 213K PEACHY KEEN 2P



Sire of Lot 36B & Lot 37
K Cartel 708 ET

Along with 2 full brothers, Cartel was a member of the Denver Champion Pen of 3 Bulls, selling in the Mile High sale for \$62,500

BW	EPDS	BW	WW	YW	MM	TM
87 lbs.		3.4	51.0	83.8	27.6	53.1



Selling choice of lots 38A & 38B

A real sweet three year old with an ideal udder and lots of body. She offers performance, volume and maternal strength. We cannot say enough about these Chizel females. 24F is raising a beautiful heifer calf that is going to continue to turn heads this fall.

Bred to Churchill Red Baron 8300F ET on March 25, 2021. Preg checked safe.



Bar JM

Lot 38A

Lot 38A BAR-J-M **RUBY** 24F {DLF HYF IEF MSUDF MDF}

PC03046289 JBS 24F 13/02/2018 POLLED FEMALE

NJW 73S W18 HOMETOWN 10Y ET (DLF HYF IEF MDC) NJW P606 72N DAYDREAM 73S (DLF HYF IEF)
 MHPH 10Y CHIZEL ET 1021C (DLF HYF IEF MSUDF MDF) MHPH 102S WYATT 301W (DLF HYF IEF)
 MHPH 301W DAINTY 205Y (DLF HYF IEF MSUDF MDF) MHPH MS 101S DAINTY 123U (DLF HYF IEF)
 RVP STAR 533P CAN-AM ET 57U
 STAR MARKET INDEX 70X ET (DLF HYF IEF MSUDF) NJW 29M INVESTOR GAL 129R (DLF HYF IEF)
SQUARE-D INVESTOR GAL 2400Z REMITALL SUPER DUTY 42S (DLF HYF IEF)
 SQUARE-D RITA 400U SQUARE-D ERIN 460R

EPDS	BW	WW	YW	MM	TM
	4.1	60.2	102.3	21.2	51.3

Lot 38B BAR-J-M 117E **JOLENE** 24J {DLF HYF IEF MSUDF MDF}

PC03080703 JBS 24J 03/02/2021 POLLED FEMALE

CHURCHILL STUD 3134A KJ HVH 33N REDEEM 485T ET (DLF HYF IEF)
 CHURCHILL LADY 002X ET
 MHPH 3134 EVOLUTION 117E (DLF HYF IEF MSUDF MDF) NJW 73S W18 HOMETOWN 10Y ET (DLF HYF IEF MDC)
 MHPH 10Y NITA 226B (DLF HYF IEF MDF) MHPH MS 68M NITA 1112R (DLF HYF IEF)
 NJW 73S W18 HOMETOWN 10Y ET (DLF HYF IEF MDC)
 MHPH 10Y CHIZEL ET 1021C (DLF HYF IEF MSUDF MDF) MHPH 301W DAINTY 205Y (DLF HYF IEF MSUDF MDF)
BAR-J-M RUBY 24F (DLF HYF IEF MSUDF) STAR MARKET INDEX 70X ET (DLF HYF IEF MSUDF)
 SQUARE-D INVESTOR GAL 2400Z SQUARE-D RITA 400U

BW	EPDS	BW	WW	YW	MM	TM
83 lbs.		3.3	58.0	91.9	22.3	51.3

Selling choice of lots 38A & 38B

A real neat Evolution daughter right here. A definite show heifer prospect. She has been named Heifer Calf Champion and Reserve Female on her first trip to town. She is cool hipped, sharp fronted, dark red and just keeps getting better every day. 24J is as bomb and kid proof as they come, she would make a fantastic prospect for Bonanza 2022 in Lindsay.



Bar JM

Lot 38B



Selling choice of lots 39A & 39B

Two Chizel daughters that we think a lot of. Both different in their make up but equally as good. 254H is a goggled eyed powerhouse that is massive middled and is sure to be a tremendous female in production. Her mother is a donor in our program and we see the same in 254H's future. This girl has a bright future ahead of her.

Bred to Churchill Red Baron 8300F ET on March 25, 2021. Preg checked safe.

Lot 39A BAR-J-M **RITA** 254H {DLF HYF IEF MSUDF MDF}
 PC03070243 JBS 254H 01/01/2020 POLLED FEMALE

SHF WONDER M326 W18 ET (DLF HYF IEF MDC)
 NJW 73S W18 HOMETOWN 10Y ET (DLF HYF IEF MDC) NJW P606 72N DAYDREAM 73S (DLF HYF IEF)
MHPH 10Y CHIZEL ET 1021C (DLF HYF IEF MSUDF MDF) MHPH 102S WYATT 301W (DLF HYF IEF)
 MHPH 301W DAINTY 205Y (DLF HYF IEF MSUDF MDF) MHPH MS 101S DAINTY 123U (DLF HYF IEF)

REMITALL PATRIOT ET 13P
 REMITALL RITA 91H
 WILGOR 55K NORTHEASTERN OL 2N (DLF HYF IEF)
 SQUARE-D NADIA 554P

REMITALL SUPER DUTY 42S (DLF HYF IEF)
SQUARE-D RITA 254Y (DLF HYF IEF)
 SQUARE-D ELLIE 354T

Lot 39B BAR-J-M 1021C **HAZEL** 4H {DLF HYF IEF MSUDF MDF}
 PC03070244 JBS 4H 03/02/2020 POLLED FEMALE

SHF WONDER M326 W18 ET (DLF HYF IEF MDC)
 NJW 73S W18 HOMETOWN 10Y ET (DLF HYF IEF MDC) NJW P606 72N DAYDREAM 73S (DLF HYF IEF)
MHPH 10Y CHIZEL ET 1021C (DLF HYF IEF MSUDF MDF) MHPH 102S WYATT 301W (DLF HYF IEF)
 MHPH 301W DAINTY 205Y (DLF HYF IEF MSUDF MDF) MHPH MS 101S DAINTY 123U (DLF HYF IEF)

THM DURANGO 4037 (DLF HYF IEF)
 CRR D03 CASSIE 206
 GHC-TABOO COALITION 52U (DLF HYF IEF)
 BAR-J-M NICKY 16U (DLF HYF IEF MSUDF)

CRR ABOUT TIME 743 (DLF HYF IEF MDF)
RWB DAZZLE 4D
 RWB NIKITA 3B

EPDS	BW	WW	YW	MM	TM
	3.9	59.2	100.7	24.1	53.7

EPDS	BW	WW	YW	MM	TM
	0.2	45.1	77.3	19.6	42.2



Selling choice of lots 39A & 39B

4H is a moderate framed, long bodied female that is going to add lots of udder quality. She comes from a powerhouse cow family. Her full sister sold to Nelson Hirsche for \$10,500 in the 2018 AA Sale. 4H is a 4H project for a very dedicated young lady. We would like to retain her until the completion of the Ontario fall show run.

Bred to LCX Perfecto 11B ET on March 25, 2021. Preg checked safe.

Bobby bought this bred's mother, Patches DHE13, from Doss Herefords and she is being managed at our farm in the Ottawa Valley. Take a look at both daughters we have consigned, this cow gets it done no matter the sire. Red Velvet 108H is a Whitehawk Warrior daughter that is short marked, very pigmented and is the easiest doing yearling on the farm. This heifer is a real crowd favourite.

Bred to Remital Chinook 42G on April 15, 2021. Preg checked safe in calf.
Owned with BNC Polled Herefords



**Lot
40**

Lot 40 BNC 845C **RED VELVET** 108H {DLF HYF IEF MSUDF MDF}
 PC03079083 BN 108H 06/01/2020 POLLED FEMALE

UPH PROSPECTOR P152
WHITEHAWK WARRIOR 845C ET
 GRANDVIEW CMR 4003 BETH Y115ET

APH DOSS 10Y HOME STRETCH 6B {MDC}
DOSS 6B PATCHES DHE13 {DLF HYF IEF MSUDF MDF}
 KACZ 60A COOKIE 2058 86C

HUTH PROSPECTOR K085
 UPH MANDY M863
 GRANDVIEW VIC H132 23G 4003 ET
 DJB 46B BETH 1L

NJW 73S W18 HOMETOWN 10Y ET {DLF HYF IEF MDC}
 APH RACHEL 15Z
 BOYD DR MASTERPIECE 2058
 KACZ 4K 4R QUEEN Y176 60A

EPDS	BW	WW	YW	MM	TM
	1.4	58.6	97.6	31.5	60.8

Lot 41 DORBAY BNC **RED VELVET** 104J {DLF HYF IEF MSUDF MDF}
 PC03084031 RDF 104J 04/01/2021 POLLED FEMALE

NJW 73S 38W RIMROCK 27C ET {MDF}
GLENLEES BNC 27C IMPACT 43F {DLF HYF IEF MSUDF}
 BNC 111Y NELLIE 308A

APH DOSS 10Y HOME STRETCH 6B {MDC}
DOSS 6B PATCHES DHE13 {DLF HYF IEF MSUDF MDF}
 KACZ 60A COOKIE 2058 86C

NJW 76S P20 BEEF 38W ET
 NJW P606 72N DAYDREAM 73S {DLF HYF IEF}
 GRANDVIEW VIC H132 23G 4003 ET
 BNC R117 NELLIE ET 401Y {DLF HYF IEF}

NJW 73S W18 HOMETOWN 10Y ET {DLF HYF IEF MDC}
 APH RACHEL 15Z
 BOYD DR MASTERPIECE 2058
 KACZ 4K 4R QUEEN Y176 60A

BW	EPDS	BW	WW	YW	MM	TM
84 lbs.		3.5	58.9	93.8	34.3	63.8

Once again we are offering a powerful heifer calf out of Doss 6B Patches DHE13. Expansive rib, long and displays that front pasture female profile that will be a sure bet as a cow. In the meantime, this beauty will compete in the show ring. Another dynamic Impact heifer has an exciting future ahead of her. Don't miss out on this feature heifer calf.

Owned with BNC Polled Herefords



**Lot
41**

Dorbay Polled Herefords



We are selling this great Blair-Athol cow to show-off the pair. Take a close look at this cow's pedigree that goes back to Playmaker and Heat. She is brockel faced and broody with an udder that will last the test of time. What a marvelous job she did on her January Impact heifer calf. A special feature is her breeding to Churchill Red Baron 8300F ET.

Bred to Churchill Red Baron 8300F ET on March 26, 2021. Preg checked safe in calf.

**Lot
42**

Lot 42 **BLAIR-ATHOL 43C GIGI 146F**
 PC03053283 DVL 146F 24/04/2018 POLLED FEMALE

TH 512X 719T PLAYMAKER 14Z (MDF)
REMITALL-W BNC ACE 43C (DLF HYF IEF MSUDF MDF)
 REMITALL-WEST MARVEL ET 5Z (DLF HYF IEF)

BLAIR-ATHOL 80P CONTENDER 56W (DLF HYF IEF)
BLAIR ATHOL 56W GOLDY 55A
 BLAIR-ATHOL 161 GOLDEN EYE 77Y

TH 122 71I VICTOR 719T (DLF HYF IEF MDF)
 TH 122 71I DOMINETTE 512X ET
 SHF WONDER M326 W18 ET (DLF HYF IEF MDC)
 REMITALL MARVEL 78T (DLF HYF IEF)

LAGRAND RELOAD 80P ET (DLF HYF IEF)
 WILGOR 47K DANCETTE 37H 41N
 REMITALL HEATER 161U (DLF HYF IEF)
 BLAIR-ATHOL RIBEYE GAL 107W (DLF HYF IEF MSUDF)

EPDS	BW	WW	YW	MM	TM
	5.5	64.4	107.3	24.2	56.4

Lot 43 **DORBAY MISS GIGI 10J (DLF HYF IEF MSUDF MDF)**
 PC03081700 RDF 10J 12/01/2021 POLLED FEMALE

NJW 73S 38W RIMROCK 27C ET (MDF)
GLENLEES BNC 27C IMPACT 43F (DLF HYF IEF MSUDF)
 BNC 111Y NELLIE 308A

REMITALL-W BNC ACE 43C (MDF)
BLAIR-ATHOL 43C GIGI 146F
 BLAIR ATHOL 56W GOLDY 55A

NJW 76S P20 BEEF 38W ET
 NJW P606 72N DAYDREAM 73S (DLF HYF IEF)
 GRANDVIEW VIC H132 23G 4003 ET
 BNC R117 NELLIE ET 401Y (DLF HYF IEF)

TH 512X 719T PLAYMAKER 14Z (MDF)
 REMITALL-WEST MARVEL ET 5Z (DLF HYF IEF)
 BLAIR-ATHOL 80P CONTENDER 56W (DLF HYF IEF)
 BLAIR-ATHOL 161 GOLDEN EYE 77Y

EPDS	BW	WW	YW	MM	TM	
	75 lbs.	3.4	55.5	89.5	32.9	60.7



Sire of Lots 43, 45, 46, 47, and 48
 Glenlees BNC 27C Impact 43F

I really like this pair. 10J is as fancy as they come. We cannot be more pleased with our Impact progeny. Miss GiGi 10J is a definite consideration for a Bonanza project next year. Check out her profile and structure. Like her mother, she is long with loads of maternal power and will make a great addition to your herd with the potential of some success in the show ring!

**Lot
43**

A very feminine Rainmaker heifer out of a heavy milking Kickstart two year old that did a great job raising her first calf. Follow her pedigree back to 54Y, our selection from the McEachren dispersal 10 years ago. 54Y was a no-miss cow who produced top sellers at Autumn Alliance including the champion calf at Bonanza 2014. Miss Gloria 9J will make a dandy junior project and fit right into the top end of your replacement pen.



Lot
44

Lot 44 DORBAY **MISS GLORIA** 9J {DLF HYF IEF MSUDF MDF}
PC03081703 RDF 9J 10/01/2021 POLLED FEMALE

TH 71U 719T MR HEREFORD 11X (DLF HYF IEF)
KCL WPF THE PROFESSOR 7110ET (DLF HYF IEF MSUDF) KCL 29R MARY ANNE 23G 5R ET
REMITALL-W RAINMAKER ET 14E (DLF HYF IEF MSUDF MDF) SHF WONDER M326 W18 ET (DLF HYF IEF MDC)
REMITALL-WEST MARVEL ET 76Y (DLF HYF IEF MDF) REMITALL MARVEL 78T (DLF HYF IEF)
CHURCHILL KICKSTART 501C ET
DORBAY MISS GLORIA 402G
EJM MISS YANVANI 70T 54Y (DLF HYF IEF MSUDF) CHURCHILL RED BULL 200Z (DLF HYF IEF MDF)
HVH OKSANA 4L 33N (DLF HYF IEF)
EJM TOULOUSE 20X ET 70T
EJM MISS SOFIA 201N 66S

BW	EPDS	BW	WW	YW	MM	TM
70 lbs.		2.5	46.7	69.7	17.3	40.7

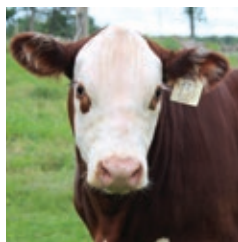
Lot 45 DORBAY JS **YELLOW ROSE** 13J {DLF HYF IEF MSUDF MDF}
PC03081701 RDF 13J 14/01/2021 POLLED FEMALE

NJW 73S 38W RIMROCK 27C ET (MDF)
GLENLEES BNC 27C IMPACT 43F (DLF HYF IEF MSUDF)
BNC 111Y NELLIE 308A
NJW 76S P20 BEEF 38W ET
NJW P606 72N DAYDREAM 73S (DLF HYF IEF)
GRANDVIEW VIC H132 23G 4003 ET
BNC R117 NELLIE ET 401Y (DLF HYF IEF)
REMITALL-WEST GAME DAY ET 74Y (DLF HYF IEF MDC)
REMITALL-WEST YELLOW ROSE 2Y (DLF HYF IEF)
WCC 207D YELLOW ROSE 2078F (DLF HYF IEF MSUDF)
CHULA-VISTA DOLLY 207D (DLF HYF IEF MSUDF)
NJW 144Y 174X DIABLO 180A (DLF HYF IEF)
WCC 161X MARVEL 4827B

BW	EPDS	BW	WW	YW	MM	TM
85 lbs.		3.9	59.6	96.2	32.7	62.5

Take a close look at this beautiful heifer calf. Very short marked and pigmented. She comes from our selection from the Wascana dispersal. Her mother has a picture perfect udder and has certainly proven she can knock out a good one. Once again, Yellow Rose 13J is a bonanza project in the making and an Impact daughter that won't disappoint.

Owned with
Jordon Schoenfeldt



Lot
45

Dorbay Polled Herefords



Sire of Lots 43, 45, 46, 47, and 48
Glenlees BNC 27C Impact 43F

Talk about a stand-out performance Impact bred heifer to add to your herd. A full sibling to RDF 23J, Tina 15H also packs some serious punch when you consider what the beef business needs to be more about.... pounds over the scale. Like her sister, she is long, deep and wide topped.

Bred to Remital Chinook 42G on April 9, 2021. Preg checked safe in calf.

Lot 46

Lot 46 DORBAY **MISS TINA** 15H (DLF HYF IEF MSUDF MDF)
PC03069510 RDF 15H 22/02/2020 POLLED FEMALE

NJW 76S P20 BEEF 38W ET
NJW 73S 38W RIMROCK 27C ET (MDF)
GLENLEES BNC 27C IMPACT 43F (DLF HYF IEF MSUDF)
BNC 111Y NELLIE 308A

AXA GOLDEN-OAK XCEED ET 704X (DLF HYF IEF MDF)
AXA 704X TINA 112C (DLF HYF IEF MSUDF)
AXA 69T TRAVELER TINA 106W

NJW P606 72N DAYDREAM 73S (DLF HYF IEF)
GRANDVIEW VIC H132 23G 4003 ET
BNC R117 NELLIE ET 401Y (DLF HYF IEF)

SHF RIB EYE M326 R117 (DLF HYF IEF)
NCX MISS JR NELLIE 528N
HARVIE TRAVELER 69T (DLF HYF IEF MDF)
AXA KB MISS ROYALTY 113R

Lot 47 DORBAY **MISS TINA** 23J (DLF HYF IEF MSUDF MDF)
PC03081692 RDF 23J 01/02/2021 POLLED FEMALE

NJW 76S P20 BEEF 38W ET
NJW 73S 38W RIMROCK 27C ET (MDF)
GLENLEES BNC 27C IMPACT 43F (DLF HYF IEF MSUDF)
BNC 111Y NELLIE 308A

AXA GOLDEN-OAK XCEED ET 704X (DLF HYF IEF MDF)
AXA 704X TINA 112C (DLF HYF IEF MSUDF)
AXA 69T TRAVELER TINA 106W

NJW P606 72N DAYDREAM 73S (DLF HYF IEF)
GRANDVIEW VIC H132 23G 4003 ET
BNC R117 NELLIE ET 401Y (DLF HYF IEF)

SHF RIB EYE M326 R117 (DLF HYF IEF)
NCX MISS JR NELLIE 528N
HARVIE TRAVELER 69T (DLF HYF IEF MDF)
AXA KB MISS ROYALTY 113R

EPDS	BW	WW	YW	MM	TM
	7.4	67.5	100.3	34.7	68.5

EPDS	BW	WW	YW	MM	TM
93 lbs.	5.6	61.6	88.7	33.2	64.0



This heifer is out of a powerful Xceed mother purchased from AXA and Scott Young. She is the performance heifer calf of our 2021 offering (check out her full yearling sib in the sale-RDF 15H). Impact has left us many exciting progeny for our replacement pen or she would not be selling. Tina 23J is deep, broody and is sure to drop a productive udder, just like her momma.

Lot 47

Flower Girl 12H is a bred heifer built with many of Dorbay proven sire's and dam's. To start, she hails from the infamous Hinterland Swamp Girl 51R, a genetic gem that has influenced the base of much of our current cow herd. Add in Impact and Yankee and you have a cow in the making. This Impact daughter is deep, profiles nicely with a beautiful head and front end. Her udder is developing nicely.

Bred to Remittal Chinook 42G on May 22, 2021. Preg checked safe in calf.



Lot 48 DORBAY 43F **FLOWER GIRL 12H** (DLF HYF IEF MSUDF MDF)
PC03069515 RDF 12H 07/02/2020 POLLED FEMALE

NJW 73S 38W RIMROCK 27C ET (MDF)	NJW 76S P20 BEEF 38W ET
GLENLEES BNC 27C IMPACT 43F (DLF HYF IEF MSUDF)	NJW P606 72N DAYDREAM 73S (DLF HYF IEF)
BNC 111Y NELLIE 308A	GRANDVIEW VIC H132 23G 4003 ET
	BNC R117 NELLIE ET 401Y (DLF HYF IEF)
JDH 10S YANKEE 39X (DLF HYF IEF)	AH YANKEE 10S
DORBAY MISS FLOWER GIRL 12F (DLF HYF IEF MSUDF)	AH JDH WRANGLER QUEEN 22T ET (DLF HYF IEF)
HINTERLAND SWAMP GIRL 51R (DLF HYF IEF MSUDF)	DXB 73J CISCO 10M
	HINTERLAND FLOWER 20M

EPDS	BW	WW	YW	MM	TM
	3.8	69.0	95.6	31.1	65.6

Terms and Conditions...

TERMS:

The terms of the sale are cash or cheque, payable at par at the sale location. The right of property shall not pass until after settlement has been made; no invoicing on buyers in attendance unless previous arrangements have been made. Every animal sells to the highest bidder and in cases of disputes, the auctioneer's decision will be final. Announcements from the auction block will take precedence over the printed matter in the catalogue. Current exchange rates will be announced sale day. All monies are in Canadian funds.

CERTIFICATE OF REGISTRATION:

Each animal will carry papers issued by the Canadian Hereford Association unless otherwise stated. A certificate of registry duly transferred will be furnished to the buyer for each animal after payment has been made.

PEDIGREE ESTIMATES

Pedigree Estimates (PE) are created on the projected mating of the animal's sire and dam based on averages of the two, creating estimated values that do not hold the same accuracy of actual EPDs issued from the association and should be used as such.

HEALTH:

All animals in the sale have met all necessary health requirements.

GUARANTEE:

Each animal becomes the purchaser's risk immediately after the animal is sold. All animals in this sale will be sold under the terms and guarantees set forth by the Canadian Hereford Association with regard to health, freedom from defects and from both reproductive and specific genetic unsoundness. The Autumn Alliance consignors stand behind any animal sold in this sale

PREGNANCY INFORMATION:

All serviceable age females have been pregnancy examined by an accredited veterinarian, giving an estimated length of gestation. This estimated gestation period shall be used only as a guideline to calving and is not a guarantee of actual service.

LIABILITIES:

All persons attend the sale at their own risk. The seller, facility owner and sale manager assume no liability legal or otherwise, for any accidents that occur. It is understood that T Bar C Cattle Co. (2013) Ltd. is acting only as a medium between buyer and seller and is not responsible for any failure on the part of either party to live up to his obligations. Neither does T Bar C Cattle Co. (2013) Ltd. assume any financial obligations to collect or enforce collection of any monies between parties and any legal action that may in exceptional cases be taken must be between the buyer and the seller. T Bar C Cattle Co. (2013) Ltd. assumes no responsibility for any credit extended by the seller to the buyer. The buyer must look to the seller for fulfillment of all guarantees and representations made hereunder.

DELIVERY:

Will be provided at cost and at the buyer's option and risk. Instructions for delivery must be given at time of settlement. No cattle will be released until after the conclusion of the sale. Each animal becomes the risk of the purchaser as soon as sold; therefore, buyers are urged to insure animals for full value. An insurance salesman will be in attendance.

PHONE, MAIL, WIRE BIDS:

Bidders unable to attend the sale may phone, wire or mail their bids and instructions to the sale manager, auctioneer or special representatives. Bids must be received in sufficient time prior to the sale.

INSURANCE:

We strongly recommend that insurance is purchased for full value.

ERRORS:

All announcements at sale time, written or oral, supersede any written material in the catalogue.

**Return Undeliverable
Canadian Addresses To:
T Bar C Cattle Co. Ltd.
Box 2330
Warman, SK S0K 4S0**

